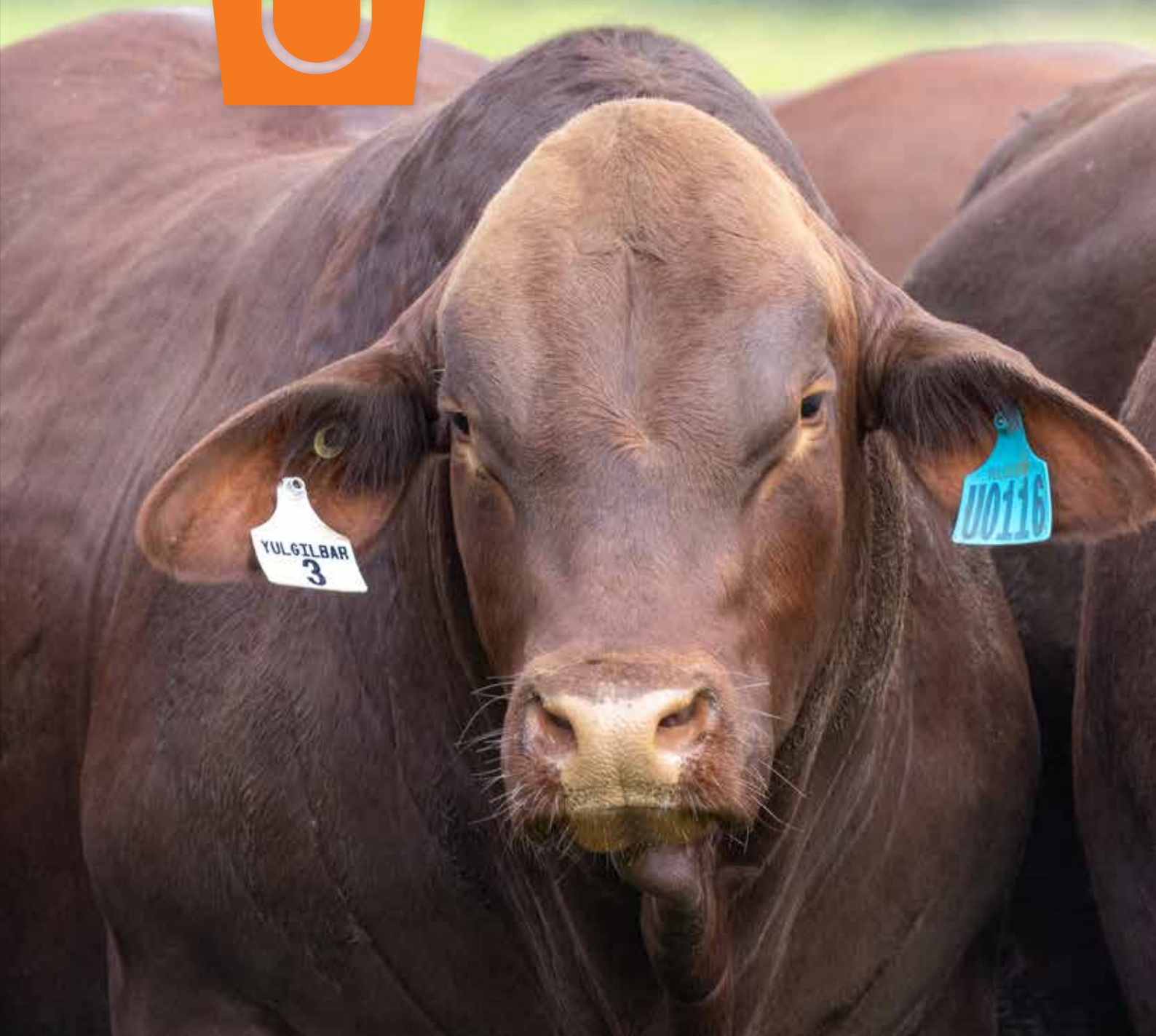


2025 Bull Sale



60 CLASSIFIED S SANTA GERTRUDIS BULLS
& 10 SANGUS BULLS

5th September, 2025

YULGILBAR

SANTA GERTRUDIS STUD NO.13



Yulgilbar

SANTA GERTRUDIS
STUD NO. 13

2025 Production Sale

FRIDAY 5th SEPTEMBER

Broadwater Sales Complex,
Yulgilbar Station, Baryulgil NSW

Cattle on Display from 9am
Sale commences 12 noon

Sale Inspections:
Presale inspections welcome,
contact Brett or Darren for bookings

OFFERING:

60 Santa Gertrudis Bulls
10 Sangus Bulls

 **STOCKLIVE**

Brett Ellem,
General Manager

Yulgilbar Station
Baryulgil NSW 2460

P 02 6647 2101 **M** 0427 772 507

E brett.ellem@yulgilbar.com.au

Darren Perkins

M 0428 660 324



**VIEW SALE
VIDEOS & MORE
INFO HERE**

Visit our web site or facebook
page for further sale information
and supplementary sheets as they
come available.

Please bring this catalogue to the sale.

www.yulgilbar.com.au





2025 Annual Production Sale Welcome

Dear Valued Bull Buyers,

Welcome to the 2025 Yulgilbar Pastoral Company Annual Production Sale.

Following Samuel's untimely passing in 1960, the responsibility of carrying forward his vision fell to Bails and Sarah, who together built a breeding program grounded in quality, consistency, and long-term thinking. In more recent years, it has been a privilege for the next generation — Sidney, Rupert, and Samantha — to take a more active role in the stewardship of Yulgilbar, with the same passion and commitment that has defined it from the beginning.

As the third oldest active Santa Gertrudis stud in Australia, Yulgilbar has long benefited from exceptional bloodlines — from the original King Ranch sires to bulls from Murrumbo, The Lakes, Yarrowonga, and our own home-bred lines. This year's sale features a strong mix of proven and new sires. You'll find continued influence from Hardigreen Park Viceroy, Waco Queenslander, Murgona Nightcap, Cardona Patterson, Dunlop Unguarded, and Yulgilbar Quiksilver, alongside first offerings from Darr Creek Serengeti, Diamond H Yarraman, Jamar Stuntman, and Watasanta Stetson — all carefully selected to complement and enhance the Yulgilbar herd.

This year also marks an exciting new chapter for Yulgilbar

and the broader Santa Gertrudis community. We are proud to announce the acquisition of the herd from Hardigreen Park Stud — a significant step forward for our breeding program and an important moment in the breed's history. Hardigreen Park has long been recognised for producing some of the most consistent and high-performing cattle in the country. We extend our sincere thanks to the Rolfe family for their decades of hard work, dedication, and contribution to the Santa Gertrudis breed. We are honoured to carry these genetics forward and will do so with the same care and integrity that has always defined their operation.

Our program continues under the expert guidance of Brett Ellem, whose leadership, along with that of Lucy and our dedicated team, ensures Yulgilbar continues to evolve while staying true to its foundations. We thank them for their unwavering commitment and hard work.

From all of us — Sarah, Sidney, Rupert, Samantha and our families — we warmly welcome you to this year's sale. We are proud of the draft we present and hope you find bulls that will be a valuable addition to your herd. Thank you for your continued support and for being part of the Yulgilbar story.

Warm regards,

Sarah Myer, Sidney Myer, Rupert Myer, Samantha Baillieu and families



Sale information

GUARANTEE

All stud stock are guaranteed breeders. Any claim against the breeding ability of any animal should be made in writing and accompanied by a veterinary certificate within 6 months of sale. In the event of an animal failing to breed, it may be either replaced with an animal of comparable value or credit to the purchase price will be given at the following sale or on a private sale animal.

All lots sell as EU Accredited

Vendor rebate – The vendors agree to pay:

STUD CATTLE

- 4% rebate to outside agents who
 - Introduce buyers in writing at least 24 hours prior to the sale.
 - Accompany client to the sale.
 - Settle all accounts in full no later than Friday 10th September 2024.
- 2% rebate to outside agents who introduce buyers at least 24 hours prior to sale and settle all accounts in full no later than Friday 10th September 2024.
- **No rebate will be paid outside these conditions (strictly enforced).**

Delivery of sale cattle will be given from Saturday 4th September 2024. No verbal instructions will be accepted and no cattle are to be loaded without approval of Brett Ellem or the delivery agent (George and Fuhrmann). Please fill out the delivery form at the back of the catalogue.

HEALTH

- Yulgilbar Station is an accredited TB and Brucellosis free herd.
- Stock from Yulgilbar Station (Broadwater Sales Complex) will be free to move.
- Yulgilbar Station is currently rated Johnnes JBAS 7 in NSW and has completed Bio security plans which can be viewed on request on sale day.

VACCINATION PROGRAM

All stud cattle will have been vaccinated for:

- | | |
|--------------------|---|
| - Botulism | - All cattle have been treated with Dectomax V and Flukecare C. |
| - 3 day sickness | |
| - 7-1 | - Pestivirus and tested negative for Persistently Infected (P.I.) animals |
| - Bulls for vibrio | - Treated with Rhinogard and Bioishield |

To maintain ongoing immunity, it is recommended that you vaccinate your purchases with an annual booster shot in June each year.

SALE AGENTS:

George and Fuhrmann

Darren Perkins **M** 0428 660 324

Casino Office **P** 02 6662 2500 **F** 02 6662 1736

Jason Somerville **M** 0429 660 657

David O'Reilly **M** 0428 299 743

Riley Wellman **M** 0499 222 514

Yulgilbar Station PIC number - NF281077

LPA level 2 # P2002171

MSA Producer #C106

Member NSW Farmers

Member Santa Gertrudis Breeders Australia Association
P 07 3216 2708

Santa Gertrudis Group Breed Plan

Horn Poll test by Zoetis

Bulls Semen and Morphology Tested, Soundness Evaluated By:

Ced Wise Veterinary Services, Glen Aplin QLD

Dr Cedric Wise **M** 0428 718 640

Fat, Eye Muscle Scanned

Roger Evans **M** 0427 102 258

Herd Health

Phillip Sharman, Casino Vet Clinic **P 02 6662 2488**

Pregnancy testing of sale females

Tested negative for P.I. (persistently infected) for Peste Virus

TELEPHONE LINK UP

In the event of you being unable to be at the sale and would like to bid, we will arrange for a phone link up should you wish to participate. Please contact the vendor or your preferred agent prior to the sale. Live online bidding available.

Disclaimer

Whilst all due care and attention has been paid to the accuracy in the compilation of this catalogue, either the vendors (or their employees) nor the selling agents assume any responsibility what so ever for the correctness, use or interpretation of the information included this sale catalogue.

All persons attend Yulgilbar Station and the sale at their own risk.



GETTING HERE

Sale at Broadwater Sales Complex, Yulgilbar Station, Baryulgil NSW

Please note poor mobile service



Google directions to Yulgilbar sale:

<https://maps.google.com.au/maps/ms?msid=205627425238397212181.00048d734cb180c56b0c8&msa=0&ll=-28.671311,150.413818&spn=4.46239,9.876709>

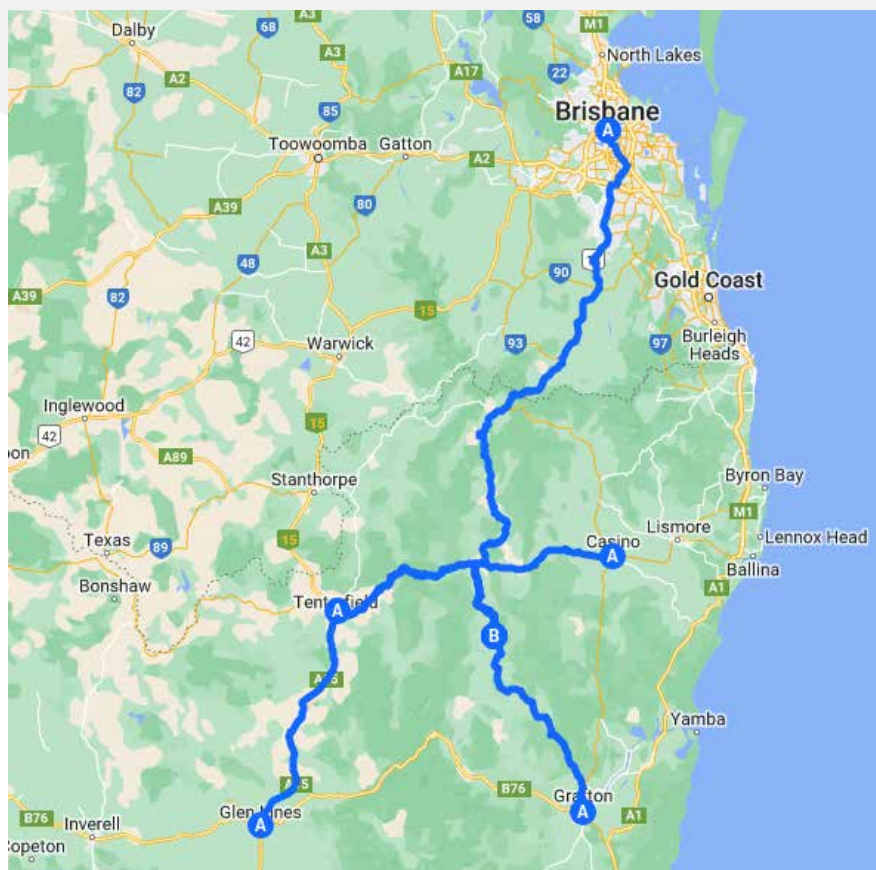
Yulgilbar Airport

Baryulgil airfield is a private non licensed airfield located on Yulgilbar Station at Baryulgil NSW. The Airfield is fenced; located in a Cattle Paddock, the surface is sealed, the direction is approximately 150/330 degrees, and there is an uphill rise to the South East of approximately 20 meters over the 1600 metre length of the Airfield.

Elevation is approximately 450 AMSL.

Position: S29.13.3 E152.37.5.

- Please contact the station prior to landing (24 hours notice) so arrangements can be made to meet planes on arrival and transport passengers to the sale.
- There are daily commercial flights to Grafton and Lismore airports by Rex Airlines.
- A number of motels are located in Tenterfield, Casino, Lismore and Grafton (prior booking recommended)
- Travel time by car to Yulgilbar Station (Broadwater Sales Complex)
 - Casino – 1 hour
 - Tenterfield – 1hour 30 minutes
 - Grafton –1 hour 15 minutes





STOCKLIVE ELITE

Steps To Register



Using your chosen device visit www.stocklive.com.au.



Click **BID** located next to the sale you wish to participate in.

New Users



To create an account click **REGISTER**. Fill in your details, then click **CREATE BIDDER REGISTRATION**.



You will receive an email prompting you to confirm your account, create a password, accept Bidder Account T&C's & Privacy Policy.



Congratulations! Your StockLive account has been created.

Existing Users



LOGIN and find the sale you wish to bid on, click **Request to bid** & **Accept terms to bid**.

On Sale Day



Visit www.stocklive.com.au, when the sale is flashing **LIVE**, click **BID** to watch, listen & purchase.



Invoicing and delivery will be carried out as per your registration & account details by the respective selling agents.



1300 259 742

support@stocklive.com.au

www.stocklive.com.au



Level 12, 1 Eagle Street, Brisbane, QLD 4000

StockLive ABN 26 621 233 805



Over 70 years of Breeding Santa Gertrudis Cattle, 1954 to 2025.





Yulgilbar Station (since 1840)

Celebrating 185 years Pastoral Settlement



Yulgilbar Station was founded in 1840 by Edward Ogilvie as a 200 000 acre sheep station. The run selected comprised the most fertile region of the Clarence River valley; in North Eastern New South Wales encompassing over 80 kilometers of the river. The property was owned by the Ogilvie family until being sold in 1926 to a syndicate of the Morrissey brothers and silent partner Tom Baillieu.

Sam Hordern was subsequently invited to join the syndicate, ultimately purchasing Yulgilbar in its entirety in 1949. Sam was a foundation director of King Ranch Australia and the first President of the Santa Gertrudis Australia Association.

Sam Hordern's daughter, Sarah and husband, Baillieu Myer, inherited Yulgilbar upon Sam's untimely death in 1960. Today the property still remains under ownership of Sarah and Baillieu Myer.



What's in a name:

Yulgilbar means 'Place of many (or little) fishes.'

Yulgilbar is a heritage listed property of natural beauty and of environmental significance.

Yulgilbar contains much historical infrastructure, dating back to 1840. The station is also characterized by its impressive permanent water systems. Yulgilbar was proclaimed a Flora and Fauna reserve in 1971.

Farming: 4500 acres is currently farmed, growing summer and winter cash and fodder crops, supplying the feed requirements of the Station as well as running a significant Hay and Fodder sales business thru "Toooloonki Division".

A herd of 5000 Santa Gertrudis cattle are now run on Yulgilbar. Yulgilbar weaner's have long been renowned for their constitution and doing ability and, in particular, their ability to gain weight under favorable conditions. These steers have sold previously from Victoria to central Queensland with excellent results.

The first Santa Gertrudis bulls were introduced to Yulgilbar Station in 1953 over Durham Shorthorn type cattle with a Devon influence. 16 King Ranch bulls dominated the early history of Yulgilbar.

Other notable sires in the early history of Yulgilbar included bulls from Bolinda vale, sister stud – Elgee Park, Robenlea, Murrumbo, Yarrowonga, Winderadeen, Rosevale, and The Lakes. These bulls all contributed to the development of the stud, along with numerous Station bred sires. Recognized cow lines in the Yulgilbar herd included the "Gold" family going back to a "Glen Prairie" cow (Kirkby family).

A major expansion of the stud has evolved over the last 10 years. 500 Stud females are currently single sire mated to elite Poll Santa Gertrudis sires.

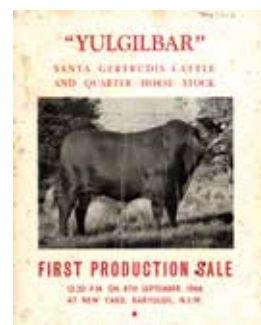
Since 2002, 80 outside bred additional stud sires have been introduced to the Yulgilbar gene pool. A significant addition to Yulgilbar genetics eventuated in 2008 with the landmark purchase of "The Lakes" Santa Gertrudis stud (owned by the Bolster family). The female portion of this widely recognized and established stud were purchased; marking the merger of these 2 major stud operations. Yulgilbar now stands as the largest Santa Gertrudis stud cattle operation in NSW.

Significant AI programs are also conducted utilizing the best available genetics. An Australian record at auction (\$80 000) was paid in 2007 for Warenda Sahara (poll). This record stood until 2015.

Waco Queenslander (P) was purchased for the then record price in 2021 \$110,000 while the Australian semen rights were purchased in the \$197,000 (AUD) record breaking American Santa Gertrudis bull - Red Doc Never Better (P).

Murgona Nightcap N43 (P) was recently purchased for \$105k from the Murgona stud at the Heart land sale in Roma 2021.

The newest addition added to the sire battery is Cardona West Germany, purchased for \$100,000 from Cardona Santa Gertrudis, Blackwater QLD.



Yulgilbar Santa Gertrudis Stud History

The Station and Stud were managed for many years by the Rogan family. Allan Rogan was manager of Yulgilbar from 1964 - 1987. He was largely responsible for the early success of the stud. The first annual production sale at Yulgilbar was conducted in September 1966.

These annual production sales continued until the beef crash in 1974. These sales comprised the sale of bulls, females, steers and significant numbers of Quarter Horse. Post 1974 Yulgilbar sold on a regular basis at the Summer-land Santa Gertrudis sale in Casino.

Sam Hordern, King Ranch, and others were also responsible for introducing Quarter Horses to Australia. Today Yulgilbar Quarter Horse stud is run from Elgee Park on the Mornington Peninsula in Victoria.

Peter Rogan managed Yulgilbar from 1988-1996.

Gail and Blythe Richie managed Yulgilbar from 1996-2001. Rob and Lorraine Sinnamon 2002 to 2021.

And currently under the management of Brett and Lucy Ellem.

Yulgilbar believe many breeds of cattle can benefit from the introduction of hybrid vigor through the use of Santa Gertrudis sires. To this end Yulgilbar also breed a number of Santa cows to Angus, Hereford and Charolais to demonstrate the benefit of crossbreeding with Santa Gertrudis. In recent times Yulgilbar has moved to the vertical integration of a significant portion of its product.

YULGILBAR STAFF

Yulgilbar Station is fortunate to have an excellent team responsible for the management of the operation. Thank you for the contribution made by all these people.

Yulgilbar has paddock sale bulls available year round.

SHOWS

We are proud of our record in recent years exhibiting many stud cattle show champions up and down the East Coast of Australia. We have now consolidated our showing to focus on the commercial reality of our business. We are particularly proud of winning the Santa Gertrudis Australia Association National Steer trophy for 9 of the past 11 years.

We believe comparison of the end result is important and gives us an indication of how industry relevant our cattle are in the market place.

We have made a "commercial practice "of showing and then selling "different "steers at each competition. Yulgilbar has been also involved with the NSW D.P.I.; MLA and CRC in recent research and validation work including validation of the "Feedlot Calculator, CRC "Age to Puberty" scanning; and polled verification testing.



Brett, Lucy, Hunter, Jewel and Dusty Ellem.

Yulgilbar Pastoral Company

Show Results

Casino Beef Week Stud 2025

Yulgilbar Ultraviolet U075 (PP)

Sired by Diamond H Yarraman (P)

1st Place - 16 months & under 20 months
Junior Champion Female

Yulgilbar Tiffany & Co. T1 (PP)

Sired by Yulgilbar Quiksilver Q144 (PP)

Calf sired by: Darr Creek Serengeti S100 (P)

1st Place - 31 months & over
Senior Champion Female

Yulgilbar Union Jack U152

Sired by Hardigreen Park Vice Roy N44 (P)

2nd Place - 16 months & under 20 months
Reserve Junior Champion Bull

Yulgilbar Tennessee Whiskey T32 (PP)

Sired by Murgona Nightcap (P)

1st Place - Bull 20 months & under 30 months
Senior Champion Bull

Supreme Exhibit: Yulgilbar Tiffany & Co. T1 (PP)

Reserve Supreme Exhibit: Yulgilbar Tennessee Whiskey T32 (PP)

Breeders Group: 1st Yulgilbar Pastoral Company

Supreme Santa Gertrudis:

1st Place - Yulgilbar Tiffany & Co. T1 (PP)

Supreme Santa Gertrudis:

2nd Place - Yulgilbar Tennessee Whiskey T32 (PP)





Supreme Exhibit at Casino Beef 2025 Yulgilbar Tiffany&Co



Success at Casino Beef Week



Steer Highlights

2025 Santa Gertrudis Feedlot Trial

70-day Domestic Class

1st ADG of 3.32kg

2nd ADG of 3.25kg

3rd ADG of 2.95kg



Cattle Selection and Santa Gertrudis Breedplan

CATTLE SELECTION

Yulgilbar advocates balanced assessment criteria for cattle selection. This combines visual appraisal for structural soundness, temperament and overall conformation; prudent use of raw measurement data - e.g. frame score, weight, daily weight gain, actual scrotal measurements, eye muscle area and fat scans. Selection of extremes should always be treated with caution. Yulgilbar supports the Santa Gertrudis classification system. Santa Gertrudis group breed plan provides estimates of breeding values that are also of assistance in making choices. Single trait selection for any characteristic is believed to be dangerous and lacks balance in any breeding program.

Use of a combination of the many available "tools" for selection in the industry today is valuable and allows the discerning cattle person to be far more informed about their livestock selections than previously before.

Please note bulls marked as Herd Bulls in the catalogue were not registered or eligible for classification. Many of these bulls would classify under breed standards, but due to not being registered are not presented for classification.

Yulgilbar now for a number of years has been utilising Parent Verification through DNA to ensure integrity in the data we provide. We are also excited that now with genomic enhanced EBV data being incorporated in Santa Gertrudis breedplan, more information will be available to the industry in assisting to make informed breeding decisions. We look forward to further utilising this data as its accuracies grow.

- This Year's Sale Bulls have been tested for the Horn Poll Test (developed by Beef CRC and commercialised by Phizer). Results will be available on sale day and on our web site once available.
- Santa Gertrudis Group Breedplan figures supplied are July 2022 group run.

FERTILITY

- All females, stud and commercial are pregnancy tested annually and all empty females are fattened and sold for slaughter
- Sale bulls are semen tested and soundness evaluated
- Sale bulls have been morphology tested
- Sale bulls are tested negative for Persistently Infected carriers of Pesti-Virus
- Herd sires are semen tested annually.

HornPoll



Understanding the EBVs, Selection Indexes and Accuracy.

EBVS

An animal's breeding value is its genetic merit, half of which will be passed on to its progeny. While we will never know the exact breeding value, for performance traits it is possible to make good estimates. These estimates are called Estimated Breeding Values (EBVs).

In the calculation of EBVs, the performance of individual animals within a contemporary group is directly compared to the average of other animals in that group. A contemporary group consists of animals of the same sex and age class within a herd, run under the same management conditions and treated equally. Indirect comparisons are made between animals reared in different contemporary groups, through the use of pedigree links between the groups.

EBVs are expressed in the units of measurement for each particular trait. They are shown as +ive or -ive differences between an individual animal's genetics difference and the genetic base to which the animal is compared. For example, a bull with an EBV of +50 kg for 600-Day Weight is estimated to have genetic merit 50 kg above the breed base of 0 kg. Since the breed base is set to an historical benchmark, the average EBVs of animals in each year drop has changed over time as a result of genetic progress within the breed.

The absolute value of any EBV is not critical, but rather the differences in EBVs between animals. Particular animals should be viewed as being "above or below breed average" for a particular trait.

Whilst EBVs provide the best basis for the comparison of the genetic merit of animals reared in different environments and management conditions, they can only be used to compare animals analysed within the same analysis. Consequently, Santa Gertrudis BREEDPLAN EBVs cannot be validly compared with EBVs for any other breed.

EBVs are published for a range of traits covering fertility, calving ease, milking ability, growth, and carcass merit. When using EBVs to assist in selection decisions it is important to achieve a balance between the different groups of traits and to place emphasis on those traits that are important to the particular herd, markets and environment.

One of the advantages of having a comprehensive range of EBVs is that it is possible to avoid extremes in particular traits and select for animals with balanced overall performance.

BIRTH WEIGHT EBV (KG)

is based on the measured birth weight of progeny, adjusted for dam age. The lower the value the lighter the calf at birth and the lower the likelihood of a difficult birth. This is particularly important when selecting sires for use over heifers.

200-DAY GROWTH EBV (KG)

is calculated from the weight of progeny taken between 80 and 300 days of age. Values are adjusted to 200 days and for age of dam. This EBV is the best single estimate of an animal's genetic merit for growth to early ages.

400-DAY WEIGHT EBV (KG)

is calculated from the weight of progeny taken between 301 and 500 days of age, adjusted to 400 days and for age of dam. This EBV is the best single estimate of an animal's genetic merit for yearling weight.

600-DAY WEIGHT EBV (KG)

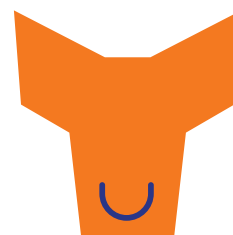
is calculated from the weight of progeny taken between 501 and 900 days of age, adjusted to 600 days and for age of dam. This EBV is the best single estimate of an animal's genetic merit for growth beyond yearling age.

MATURE COW WEIGHT EBV (KG)

is based on the cow weight when the calf is weighed for weaning, adjusted to 5 years of age. This EBV is an estimate of the genetic difference in cow weight at 5 years of age and is an indicator of growth at later ages and potential feed maintenance requirements of the females in the breeding herd. Steer breeders wishing to grow animals out to a larger weight may also use the Mature Cow Weight EBV.

MILK EBV

(kg) is an estimate of an animal's milking ability. For sires, this EBV indicates the effect of the daughter's milking ability, inherited from the sire, on the 200-day weights of her calves. For dams, it indicates her milking ability.



SCROTAL SIZE EBV (CM)

is calculated from the circumference of the scrotum taken between 300 and 700 days of age and adjusted to 400 days of age. This EBV is an estimate of an animal's genetic merit for scrotal size. There is also a small negative correlation with age of puberty in female progeny and therefore selection for increased scrotal size will result in reduced age at calving of female progeny.

CARCASE WEIGHT EBV (KG)

is based on abattoir carcass records and is an indicator of the genetic differences in carcass weight at the standard age of 650 days.

EYE MUSCLE AREA EBV (SQ CM)

is calculated from measurements from live animal ultrasound scans and from abattoir carcass data, adjusted to a standard 300 kg carcass. This EBV estimates genetic differences in eye muscle area at the 12/13th rib site of a 300 kg dressed carcass.

More positive EBVs indicate better muscling on animals. Sires with relatively higher Eye Muscle Area EBVs are expected to produce better muscled and higher percentage yielding progeny at the same carcass weight than will sires with lower Eye Muscle Area EBVs.

RIB FAT AND RUMP FAT EBVS (MM)

are calculated from measurements of subcutaneous fat depth at the 12/13 rib site and the P8 rump site (from live animal ultrasound scans and from abattoir carcasses) and are adjusted to a standard 300 kg carcass. These EBVs are indicators of the genetic differences in fat distribution on a standard 300 kg carcass.

Sires with low, or negative, fat EBVs are expected to produce leaner progeny at any particular carcass weight than will sires with higher EBVs.

RETAIL BEEF YIELD EBV (%)

indicates genetic differences between animals for retail yield percentage in a standard 300 kg carcass. Sires with larger EBVs are expected to produce progeny with higher yielding carcasses.

INTRAMUSCULAR FAT EBV (%)

is an estimate of the genetic difference in the percentage of intramuscular fat (marbling) at the 12/13th rib site in a 300 kg carcass. Depending on market targets, larger more positive values are generally more favourable.

SELECTION INDEXES

Santa Gertrudis selection indexes are calculated for two market specifications, namely, Domestic and Export. These Indexes relate to typical commercial herds targeting these specifications.

Indexes are reported as an EBV, in units of relative earning capacity (\$'s) for a given market. They reflect both the short-term profit generated by a sire through the sale of his progeny, and the long-term profit generated by his daughters in a sustainable cow herd, if a proportion of heifers are retained for breeding.

The Indexes are derived using Breed Object technology. More information on this technology is available from the Breed Object web site.

DOMESTIC PRODUCTION INDEX (\$)

Estimates the genetic differences between animals in net profitability per cow joined for an example self replacing commercial herd (run in a temperate environment) producing steers for the Domestic trade. This Index assumes that the steer progeny are pasture grown and finished and marketed at 500 kg live weight (280 kg HSCW and 12 mm P8 fat depth) at 16 months of age. Daughters are retained for breeding. More information is available on the EBV weightings for the Domestic Production Index.

EXPORT PRODUCTION INDEX (\$)

Estimates the genetic differences between animals in net profitability per cow joined for an example commercial herd (run in a sub-tropical environment) producing steers for the Export trade. This Index assumes that the steer progeny are pasture grown and finished and are marketed at 620 kg live weight (340 kg HSCW and 15 mm P8 fat depth) at 28 months of age. Daughters are retained for breeding. More information is available on the EBV weightings for the Export Production Index.

Note that \$Index Values for individual animals are sensitive to the assumptions used in the BreedObject analysis to calculate the relevant selection index.

Santa Gertrudis Breedplan

ACCURACY

Accuracy (%) is based on the amount of performance information available on the animal and its close relatives - particularly the number of progeny analysed. Accuracy is also based on the heritability of the trait and the genetic correlations with other recorded traits. Hence accuracy indicates the "confidence level" of the EBV. The higher the accuracy value the lower the likelihood of change in the animal's EBV as more information is analysed for that animal or its relatives. Even though an EBV with a low accuracy may change in the future, it is still the best estimate of an animal's genetic merit for that trait. As more information becomes available, an EBV is just as likely to increase in value, as it is to decrease.

Accuracy values range from 0-99%. The following guide is given for interpreting accuracy:

ACCURACY RANGE	INTERPRETATION
LESS THAN 50%	Low accuracy. EBVs are preliminary and could change substantially as more performance information becomes available.
50 - 74%	Medium accuracy, usually based on the animal's own records and pedigree.
75 - 90%	Medium-high accuracy. Some progeny information included. EBVs may change with addition of more progeny data.
MORE THAN 90%	High accuracy estimate of the animal's true breeding value.

As a rule, animals should be compared on EBVs regardless of accuracy. However, where two animals have similar EBVs the one with higher accuracy could be the safer choice, assuming other factors are equal.

For further information please contact Tropical Beef Technology Services or Santa Gertrudis BREEDPLAN



Yulgilbar Sale Bull Estimated Breeding Value Summary 2025

Lot No.	Society ID	Birth	200	400	600	Mat Wt	SS	DTC	Carcase	EMA	Rib	Rump	RBV	IMF
Sale Group Average		1.5	11	17	24	31	0.9	-0.8	10	2.5	0.5	0.5	0.6	0.1
Lot 1	YUL23MU192	3.3	17	20	36	37	0.6	2.9	12	2.4	0.3	-0.2	0.6	-0.1
Lot 2	YUL23MU174	4	25	36	51	58	2.1	6.1	19	4.7	0.8	0.6	0.9	-0.1
Lot 3	YUL23MU116	2.3	17	26	32	43	0.8	3.1	13	3.1	0.6	0.5	0.6	0.2
Lot 4	YUL23MU26	2.2	15	22	31	32	0.6	4.7	13	3.1	0.4	0	0.8	-0.1
Lot 5	YUL23MU110	-	11	17	22	26	0.6	-	8	3.7	1.2	1.9	-	0.4
Lot 6	YUL23MU326	3.4	23	37	45	52	2.9	3.2	18	4.2	1.1	1.1	0.3	0.3
Lot 7	YUL23MU156	3.1	19	32	41	42	2.2	0.3	14	3.9	1.2	1.1	0.3	0.4
Lot 8	YUL23MU180	1.8	10	17	23	33	-0.2	1.2	9	1.6	-0.1	-0.4	0.6	0.1
Lot 9	YUL23MU122	1.4	11	21	19	29	0.7	-	10	2.3	0.6	0.7	-	0.4
Lot 10	YUL23MU88	-	-6	-1	-5	-3	-0.4	-	0	-	0.1	0.5	-	0.2
Lot 11	YUL23MU154	2	14	28	36	40	3.5	0.1	14	3.3	0.8	0.5	0.5	0.2
Lot 12	YUL23MU200	2.5	18	25	29	40	-0.1	6.4	14	3.5	0.7	0.3	0.9	-0.1
Lot 13	YUL24MU252	-	-	-	-	-	-	-	-	-	-	-	-	-
Lot 14	YUL23MU120	1.9	12	13	20	30	0.4	-	9	1.4	0.4	0.4	0.3	-0.1
Lot 15	YUL23MU56	1.3	9	13	25	22	2	-2.2	4	1.4	1.2	1.1	-0.2	0.4
Lot 16	YUL23MU270	2.4	13	20	27	28	1.2	-2	5	1.7	1.8	1.8	-0.4	0.6
Lot 17	YUL23MU74	0.8	6	7	13	5	1.3	-1.9	-2	1.5	2.1	2.5	-0.4	0.5
Lot 18	YUL23MU58	0.8	7	16	25	22	1.2	0.9	7	2.2	0.3	0.3	0.3	0.2
Lot 19	YUL23MU172	2.8	19	31	34	42	2.7	1.3	14	3.7	1.1	1	0.4	0.3
Lot 20	YUL23MU32	-0.2	2	4	3	5	0.3	-	2	1.8	0.1	-0.3	-	0.1
Lot 21	YUL23MU62	2.3	10	2	14	12	0.8	0.4	-1	1.4	1.5	2	-0.3	0.4
Lot 22	YUL23MU106	-	6	8	12	21	0.2	-	9	3	-0.6	-0.3	-	-0.1
Lot 23	YUL23MU100	2.2	16	24	27	42	1.2	-	14	2.7	-0.4	-0.6	0.4	0.4
Lot 24	YUL23MU190	2.5	16	24	36	38	2.3	-1.9	11	3.3	1.4	1.2	0.6	0.2
Lot 25	YUL23MU182	2.5	18	28	39	42	2.2	3.1	14	3.4	1	1	0.3	0
Lot 26	YUL23MU222	0.8	5	5	17	9	-0.4	3.4	2	1.7	0.4	0.2	0.3	0.1
Lot 27	YUL23MU166	1.5	8	15	21	26	0.4	2.2	10	1.4	-0.5	-0.9	0.7	-0.1
Lot 28	YUL23MU194	2.9	19	29	34	37	2	1.3	10	3.5	1.9	2.1	0.1	0.4
Lot 29	YUL23MU318	-	-	-	-	-	-	-	-	-	-	-	-	-
Lot 30	YUL23MU82	-	10	19	18	21	0.2	-	9	-	1.2	2.1	-	0.4
Lot 31	YUL23MU90	0.8	3	2	11	9	0.1	-	2	2.5	1	1.7	-	0.1
Lot 32	YUL23MU262	0.4	2	4	4	6	-	-	2	2.4	0.8	1.4	-	0.3
Lot 33	YUL23MU144	4.7	26	30	54	64	0.8	8.6	21	2.4	-0.7	-1.5	0.7	-0.4
Lot 34	YUL23MU138	2.7	18	25	39	46	1.5	5.4	18	2.9	-0.8	-1.8	1.2	-0.4
Lot 35	YUL23MU96	-0.7	-5	-7	-11	-6	-1.4	-	-3	0.7	0.3	0.6	-	0
Lot 36	YUL23MU94	0.9	5	3	9	15	-0.6	-	5	2	0.4	0.7	-	-0.1
Lot 37	YUL23MU130	1.1	7	7	9	10	0.6	-	3	1.8	0.9	1	0.2	0.3
Lot 38	YUL23MU170	3.1	19	21	26	41	1.3	6.4	15	3.5	-0.2	-1	1.5	-0.2
Lot 39	YUL23MU44	1.1	7	14	22	23	0.5	4.1	11	2.7	-0.6	-1.3	1.3	-0.3
Lot 40	YUL23MU10	0.1	2	9	12	16	-0.1	2	7	2.9	-0.3	-0.7	0.9	0.2
Lot 41	YUL23MU158	-	7	11	11	18	0.1	-	7	-	0.1	0.6	-	0.3
Lot 42	YUL23MU176	1	9	14	6	10	0.5	2	4	2.4	1.6	1.2	0.6	0.1
Lot 43	YUL23MU68	1.8	9	10	17	14	1	2.8	3	1	0.8	0.7	0	0
Lot 44	YUL23MU76	0.9	3	3	6	0	0.6	-0.6	-3	0.4	1.5	1.5	-0.3	0.3
Lot 45	YUL23MU196	3.1	18	20	35	37	2.9	2.1	11	3.6	1.3	1.6	0.3	0.2
Lot 46	YUL23MU186	1.8	11	16	19	25	1.6	0.7	6	2.1	1	0.9	0.1	0.3
Lot 47	YUL23MU202	2.6	19	34	39	45	1.5	1.9	14	3.2	1.5	1.6	0	0.3
Lot 48	YUL23MU64	1.7	9	13	19	20	0.7	1.5	4	2.2	1.1	1.6	0	0.3
Lot 49	YUL23MU208	2.9	19	21	29	40	0.6	8.1	15	3.3	-0.7	-0.9	0.7	0
Lot 50	YUL23MU230	2.4	14	13	20	19	1.6	-	7	3	1.3	1.7	-	0.1
Lot 51	YUL23MU142	0.8	5	7	10	22	-0.6	-	6	1	-0.1	-0.3	-	0
Lot 52	YUL23MU128	1.6	11	14	19	32	-0.1	-	9	1.4	0.1	0.2	0.1	0.1
Lot 53	YUL23MU162	2.3	15	23	27	39	-0.1	2.6	11	2.8	1.3	1.4	-0.1	0.6
Lot 54	YUL23MU272	1.4	7	11	16	13	0.9	-	3	1.2	1	0.9	-	0.3
Lot 55	YUL23MU258	1.7	10	13	19	26	-0.3	-	4	1.2	1.2	1.5	-0.5	0.6
Lot 56	YUL23MU250	1.9	14	17	23	28	0.2	-	12	-	-0.2	0	-	0.1
Lot 57	YUL23MU278	3.4	18	20	32	43	0.5	7.4	15	1.7	-0.7	-1.5	-	-0.4
Lot 58	YUL23MU260	1.7	11	16	21	30	0.8	-	9	1.5	-0.1	-0.4	0.3	0.2
Lot 59	YUL23MU234	1.9	13	24	26	25	0.4	6.7	11	3	0.8	0.7	0.7	-0.2
Lot 60	YUL23MU240	1.5	13	26	22	24	0	2.9	9	3.2	1.6	1.7	0.3	0.2
Lot 61	U280	-	-	-	-	-	-	-	-	-	-	-	-	-
Lot 62	YUL23MU78	-	-	-	-	-	-	-	-	-	-	-	-	-
Lot 63	U132	-	-	-	-	-	-	-	-	-	-	-	-	-
Lot 64	YUL23MU306	-	-	-	-	-	-	-	-	-	-	-	-	-
Lot 65	YUL23MU304	-	-	-	-	-	-	-	-	-	-	-	-	-
Lot 66	U80	-	-	-	-	-	-	-	-	-	-	-	-	-
Lot 67	U312	-	-	-	-	-	-	-	-	-	-	-	-	-
Lot 68	U336	-	-	-	-	-	-	-	-	-	-	-	-	-
Lot 69	U346	-	-	-	-	-	-	-	-	-	-	-	-	-
Lot 70	YUL23MU334	-	-	-	-	-	-	-	-	-	-	-	-	-

EBV KEY	Top 1% Breed	Top 5% Breed	Top 10% Breed	Top 15% Breed
---------	--------------	--------------	---------------	---------------



2025 Reference Sires



Cardona Patterson P53 (P)

SOCIETY ID: CAR15MP53

SIRE: CARDONA MAMBO M33 (P)

DAM: CARDONA FIREFLY M280 (PS)

BREEDPLAN EBVs	GL	BW	200	400	600	Mat Cow	Milk	SS	D to C	CW	EMA	Rib Fat	Rump Fat	RBV	IMF
EBV	+0.2	+3.3	+21	+28	+32	+41	0	+1.0	+5.4	+14	+3.4	+0.4	-0.5	+1.3	-0.2
Breed EBV Avg	-0.4	+1.5	+11	+17	+24	+31	+0	+0.9	-0.8	+10	+2.5	+0.5	+0.5	-0.6	+0.1



Darr Creek Serengeti S100 (P)

SOCIETY ID: DRC20MS100

SIRE: Dunlop Taj P484 (P)

DAM: Oakdale Natalie 2032

BREEDPLAN EBVs	GL	BW	200	400	600	Mat Cow	Milk	SS	D to C	CW	EMA	Rib Fat	Rump Fat	RBV	IMF
EBV	-	-1.2	+8	+13	+13	+25	-	+0.8	-	+8	+1.8	+0.1	+0.3	+0.3	+0.3
Breed EBV Avg	-0.4	+1.5	+11	+17	+24	+31	+0	+0.9	-0.8	+10	+2.5	+0.5	+0.5	-0.6	+0.1



Diamond H Yarraman Y064 (P)

SOCIETY ID: DIA2IMY064

SIRE: YARRAWONGA P918 (PP)

DAM: DIAMOND H R322 (P)

BREEDPLAN EBVs	GL	BW	200	400	600	Mat Cow	Milk	SS	D to C	CW	EMA	Rib Fat	Rump Fat	RBV	IMF
EBV	-	-	-	-	-	-	-	-	-	-	-	-	-	-	-
Breed EBV Avg	-	-	-	-	-	-	-	-	-	-	-	-	-	-	-



Dunlop Unguarded Q162 (P)

SOCIETY ID: DNL19MQ162

SIRE: VALLEYVIEW LUKE 1546 (P)

DAM: DUNLOP H69

BREEDPLAN EBVs	GL	BW	200	400	600	Mat Cow	Milk	SS	D to C	CW	EMA	Rib Fat	Rump Fat	RBY	IMF
EBV	-	+2.4	+11	+8	+12	+12	-	+1.0	+3.3	+6	+1.6	+0.6	+0.4	+0.3	0.0
Breed EBV Avg	-0.4	+1.5	+11	+17	+24	+31	+0	+0.9	-0.8	+10	+2.5	+0.5	+0.5	-0.6	+0.1



Dunlop Warratah S306 (PS)

SOCIETY ID: DNL21MS306

SIRE: BULLAMAKINKA P184 (PS)

DAM: DUNLOP N263

BREEDPLAN EBVs	GL	BW	200	400	600	Mat Cow	Milk	SS	D to C	CW	EMA	Rib Fat	Rump Fat	RBY	IMF
EBV	-	-	-	-	-	-	-	-	-	-	-	-	-	-	-
Breed EBV Avg	-	-	-	-	-	-	-	-	-	-	-	-	-	-	-



Hardigreen Park Vice Roy N44 (P)

SOCIETY ID: HAR17MN44

SIRE: YARRAWONGA FORMIDABLE L872 (P)

DAM: HARDIGREEN PARK L13 (P)

BREEDPLAN EBVs	GL	BW	200	400	600	Mat Cow	Milk	SS	D to C	CW	EMA	Rib Fat	Rump Fat	RBY	IMF
EBV	-	+2.5	+17	+24	+25	+25	+4	+1.9	+2.5	+9	+3.2	+1.3	+1.4	+0.3	+0.2
Breed EBV Avg	-0.4	+1.5	+11	+17	+24	+31	+0	+0.9	-0.8	+10	+2.5	+0.5	+0.5	-0.6	+0.1



2025 Reference Sires



Jamar Stuntman S16 (AI)(P)

SOCIETY ID: JMR21MS16

SIRE: GLENN OAKS JIBBA J28 (P)

DAM: PAMPOOLA 732A

BREEDPLAN EBVs	GL	BW	200	400	600	Mat Cow	Milk	SS	D to C	CW	EMA	Rib Fat	Rump Fat	RBY	IMF
EBV	-0.2	+3.6	+16	+19	+33	+33	-	+0.6	+4.2	+12	+1.4	-0.2	-0.7	+0.5	-0.4
Breed EBV Avg	-0.4	+1.5	+11	+17	+24	+31	+0	+0.9	-0.8	+10	+2.5	+0.5	+0.5	-0.6	+0.1



Kemmis Nebo 902 (PP)

SOCIETY ID: KEM19M902

SIRE: MULTIPLE SIRE

DAM: MULTIPLE DAM

BREEDPLAN EBVs	GL	BW	200	400	600	Mat Cow	Milk	SS	D to C	CW	EMA	Rib Fat	Rump Fat	RBY	IMF
EBV	-	-	-	-	-	-	-	-	-	-	-	-	-	-	-
Breed EBV Avg	-	-	-	-	-	-	-	-	-	-	-	-	-	-	-



Murgona Nightcap (P)

SOCIETY ID: MRG20MN43

SIRE: WARENDA LENNOX L32 (P)

DAM: MURGONA FELICIA F55

BREEDPLAN EBVs	GL	BW	200	400	600	Mat Cow	Milk	SS	D to C	CW	EMA	Rib Fat	Rump Fat	RBY	IMF
EBV	-	-	-	-	-	-	-	-	-	-	-	-	-	-	-
Breed EBV Avg	-	-	-	-	-	-	-	-	-	-	-	-	-	-	-



Rockingham Predictor P52 (P)

SOCIETY ID: ROC18MP52

SIRE: ROCKINGHAM JOKER J100 (PS)

DAM: ROCKINGHAM F99

BREEDPLAN EBVs	GL	BW	200	400	600	Mat Cow	Milk	SS	D to C	CW	EMA	Rib Fat	Rump Fat	RBV	IMF
EBV	-	-0.8	-3	0	0	+1	-	0.0	-1.3	+2	+1.5	-0.8	-1.6	+1.2	-0.1
Breed EBV Avg	-0.4	+1.5	+11	+17	+24	+31	+0	+0.9	-0.8	+10	+2.5	+0.5	+0.5	+0.6	+0.1



Waco Queenslander Q384 (PS)

SOCIETY ID: WAC19MQ384

SIRE: WACO ADDICTIVE F1090 (PS)

DAM: YARRAWONGA H275 (P)

BREEDPLAN EBVs	GL	BW	200	400	600	Mat Cow	Milk	SS	D to C	CW	EMA	Rib Fat	Rump Fat	RBV	IMF
EBV	-	+3.3	+22	+27	+35	+48	-	+0.1	+11.7	+19	+3.3	-1.3	-1.1	+0.4	+0.1
Breed EBV Avg	-0.4	+1.5	+11	+17	+24	+31	+0	+0.9	-0.8	+10	+2.5	+0.5	+0.5	+0.6	+0.1



Watasanta Stetson 2796 (PS)

SOCIETY ID: WAT20M2796

SIRE: YARRAWONGA IRONMAN P914 (PP)

DAM: WATSANTA 1525

BREEDPLAN EBVs	GL	BW	200	400	600	Mat Cow	Milk	SS	D to C	CW	EMA	Rib Fat	Rump Fat	RBV	IMF
EBV	-	+1.1	+3	+5	+8	+1	-1	+1.6	-3.5	-5	+0.4	+2.0	+2.3	-0.6	+0.5
Breed EBV Avg	-0.4	+1.5	+11	+17	+24	+31	+0	+0.9	-0.8	+10	+2.5	+0.5	+0.5	+0.6	+0.1



2025 Reference Sires



Yulgilbar Patriot P034 (P)

SOCIETY ID: YULI8MP34

SIRE: MOONGANA KARACHI 2724 (P)

DAM: YULGILBAR K109 (P)

BREEDPLAN EBVs	GL	BW	200	400	600	Mat Cow	Milk	SS	D to C	CW	EMA	Rib Fat	Rump Fat	RBY	IMF
EBV	-	+3.6	+21	+27	+32	+50	-2	-0.4	+2.0	+11	+1.2	+2.0	+2.3	-0.7	+0.3
Breed EBV Avg	-0.4	+1.5	+11	+17	+24	+31	+0	+0.9	-0.8	+10	+2.5	+0.5	+0.5	+0.6	+0.1



Yulgilbar Quiksilver Q144 (PP)

SOCIETY ID: YULI9MQ144

SIRE: CARDONA PATTERSON P53 (P)

DAM: YULGILBAR J85 (P)

BREEDPLAN EBVs	GL	BW	200	400	600	Mat Cow	Milk	SS	D to C	CW	EMA	Rib Fat	Rump Fat	RBY	IMF
EBV	-0.4	+1.4	+11	+19	+20	+20	0	+0.3	+4.4	+7	+3.4	+1.5	+1.5	-0.8	0.0
Breed EBV Avg	-0.4	+1.5	+11	+17	+24	+31	+0	+0.9	-0.8	+10	+2.5	+0.5	+0.5	+0.6	+0.1





Yulgilbar Sidney S28 (P)

SOCIETY ID: YUL21MS28

SIRE: HARDIGREEN PARK VICE ROY N44 (P)

DAM: YULGILBAR K087 (P)



Cardona West Germany W205 (P)

SOCIETY ID: CAR22MW205

SIRE: CARDONA TENNESSEE T227 (P)

DAM: CARDONA LUCINDA T148 (P)



Rosevale Tungsten T1052 (PP)

SOCIETY ID: ROS22MT1052

SIRE: ROSEVALE MAJOR Q648 (PP)

DAM: WIGHTFIELDS HOPE J10 (P)



Munnabah Quinton 1616 (P)

SOCIETY ID: MUN21M1616

SIRE: DUNLOP TOMAHAWK P1070

DAM: MUNNABAH P2393



Yulgilbar Tennessee Whiskey T32 (PP)

SOCIETY ID: YUL22MT32

SIRE: MURGONA NIGHTCAP N43 (P)

DAM: YULGILBAR Q055 (P)



Impact Sires



Cardona Patterson P53 (P)

Cardona Patterson was purchased in 2016 and is now at the age of 11 years he is still active in the stud today.

Patterson displays exceptional breed character, skin type and is structurally sound which has carried him through for 8 years of working life to date.

Patterson has almost 250 registered progenies to his name, these include natural, AI and ET mating. Many of Patterson's progeny have gone on to produce in multiple studs across the country and overseas.

His genetic strength is proven within the Yulgilbar Stud as both his sons and daughters play a huge role in our breeding program.



Warenda Sahara S200

Warenda Sahara was purchased in 2007 for a record breaking \$80,000, he was a homozygous Poll sire with industry leading EBVs and pedigree to match.

He has become one of the most influential sires of all time within the Yulgilbar Stud and has also left a positive impact in the Santa Gertrudis Breed. He has been used heavily for AI and natural mating and now has 556 registered progenies to his name.

Sahara genetics continue to play a big part of our current breeding programs with his daughters, granddaughters and great granddaughters being some of the leading females currently in the Yulgilbar Stud continuously performing year in year out.

2024 Sale Highlight



Lot 5 Yulgilbar Titanic T156 (PP)

Sold to Dunlop Santa Gertrudis
for \$34,000

2025 Sale Bulls



YULGILBAR UTAH U192 (PP)

Society ID: YUL23MU192

Born: 1/10/2023

23 Months | Male

YARRAWONGA ARCHER G280
GLENN OAKS JIBBA J28 (P)
WACO A493
SIRE: JAMAR STUNTMAN S16 (AI)(P)
PAMPOOLA 127T
PAMPOOLA 732A
PAMPOOLA 249F

WACO YARRABIN (P)
CARDONA NARDOO N249 (PS)
CARDONA J56
DAM: YULGILBAR M049 (P)
WARENDA SAHARA (P)
YULGILBAR J267
YULGILBAR A101 (AI)(P)

Weight
ADG
Scrotal
Fat P8
Rib
Fat Rump
IMF%
EMA

Comment:

Lot 1: Utah U192 is a homozygous poll sire with great length and depth of body. He displays desirable breed character and has a clean, dark red coat. Utah is structurally sound, stands on strong bone, with a tidy underline and has a naturally quiet temperament.

Dam: Yulgilbar M049 (P) is a Cardona Nardoo daughter who has 5 calves recorded, including the V bull calf that was weaned earlier this year.

Utah is the first son to be offered by the newly released sire, Jamar Stuntman S16 (AI)(P).

Purchaser:

\$

YULGILBAR UNLIMITED U174 (PP)

Society ID: YUL23MU174

Born: 22/9/2023

23 Months | Male

WACO YALE E880 (P)
YARRAWONGA FORMIDABLE L872 (P)
YARRAWONGA G143
SIRE: HARDIGREEN PARK VICE ROY N44 (P)
HARDIGREEN PARK QUO VADIS H118 (PS)
HARDIGREEN PARK L13 (P)
HARDIGREEN PARK H27 (P)

CARDONA MAMBO M33 (P)
CARDONA PATTERSON P53 (P)
CARDONA FIREFLY M280 (PS)
DAM: YULGILBAR N133 (P)
THE LAKES P1 (AI)
YULGILBAR J85 (P)
MULTIPLE DAM

Weight
ADG
Scrotal
Fat P8
Rib
Fat Rump
IMF%
EMA

Comment:

Lot 2: Unlimited U174 is a homozygous poll bull that has natural muscle expression and length of body, plenty of spring of rib and strength of spine. He is structurally sound with a quiet temperament. The first of 11 sons to be offered in this year's sale draft by Hardigreen Park Vice Roy N44 (P). EBV figures rating in the top 5% for 200, 400, 600 day growth & EMA. U174 has a scrotal and carcass weight in the top 10%, which makes this a well-balanced bull in the top percentiles for the Santa Gertrudis breed.

Dam: Yulgilbar N133 (P) has 5 calves recorded including the V bull calf she recently weaned and she has preg tested back in calf.

Purchaser:

\$

YULGILBAR UNDERBELLY U116 (PP)

Society ID: YUL23MU116

Born: 5/8/2023

25 Months | Male

BULLAMAKINKA KONG K276
DUNLOP TAJ P484 (P)
MULTIPLE DAM
SIRE: DARR CREEK SERENGETI S100 (P)
CANOWINDRA NEBO N48
OAKDALE NATALIE 2032
OAKDALE IRMA 923

CARDONA MAMBO M33 (P)
CARDONA PATTERSON P53 (P)
CARDONA FIREFLY M280 (PS)
DAM: YULGILBAR R145
ROSEVALE COMANCHE C20
YULGILBAR E191
YULGILBAR X545

Weight
ADG
Scrotal
Fat P8
Rib
Fat Rump
IMF%
EMA

Comment:

Lot 3: Underbelly U116 is a powerful homozygous poll bull, who has a strong masculine head, with a tropical skin type and oozes sire appeal. He stands on good bone, has a light sheath and has plenty of length, volume and capacity. Underbelly is the first of 11 sons to be offered in this year's sale draft by the newly released sire, Darr Creek Serengeti S100 (P).

Dam: Yulgilbar R145 is a Patterson daughter who has 2 recorded calves and has preg tested back in calf. Underbelly is her first-born calf.

Grand Dam: Yulgilbar E191 is a Rosevale Comanche daughter who has 9 recorded progeny.

Purchaser:

\$

YULGILBAR UMPIRE U26 (P)

Society ID: YUL23MU26

Born: 1/10/2023

23 Months | Male

TYNDALE ENERGISER (PS)
 ROCKINGHAM JOKER J100 (PS)
 ROCKINGHAM B29 (P)
SIRE: ROCKINGHAM PREDICTOR P52 (P)
 MUNNABAH 400
 ROCKINGHAM F99
 ROCKINGHAM V17 (P)
 WACO F268 (ET)
 YARRAWONGA DROVER J586 (P)
 WACO AUTUMN G1017 (ET)
DAM: YULGILBAR P119 (P)
 WAREDA EQUATOR E58 (P)
 YULGILBAR H39 (P)
 YULGILBAR E213 (AI)

Weight
 ADG
 Scrotal
 Fat P8
 Rib
 Fat Rump
 IMF%
 EMA

Comment:

Lot 4: Umpire U26 is a quiet natured poll sire who stands on good bone and has plenty of sire appeal. He is an absolute powerhouse, who displays great depth of body, spring of rib and is a very structurally sound bull. Umpire is the first Rockingham Predictor son to be offered in this years draft.

Purchaser:

\$

YULGILBAR URBAN U110 (PP)

Society ID: YUL23MU110

Born: 5/8/2023

25 Months | Male

BULLAMAKINKA KONG K276
 DUNLOP TAJ P484 (P)
 MULTIPLE DAM
SIRE: DARR CREEK SERENGETI S100 (P)
 CANOWINDRA NEBO N48
 OAKDALE NATALIE 2032
 OAKDALE IRMA 923
 MULTIPLE SIRE
DAM: YULGILBAR R937 (P)
 MULTIPLE DAM

Weight
 ADG
 Scrotal
 Fat P8
 Rib
 Fat Rump
 IMF%
 EMA

Comment:

Lot 5: Urban U110 is a homozygous poll sire who stands on adequate bone and is a soft, easy doing bull. This Serengeti son demonstrates great structural soundness, strength of spine, natural doing ability and has an ultra-light sheath.

Purchaser:

\$

YULGILBAR UNANIMOUS U326 (P)

Society ID: YUL23MU326

Born: 22/11/2023

21 Months | Male

WACO YALE E880 (P)
 YARRAWONGA FORMIDABLE L872 (P)
 YARRAWONGA G143
SIRE: HARDIGREEN PARK VICE ROY N44 (P)
 HARDIGREEN PARK QUO VADIS H118 (PS)
 HARDIGREEN PARK L13 (P)
 HARDIGREEN PARK H27 (P)
 WAREDA SAHARA (P)
 YULGILBAR GOVERNOR G038 (PS)
 YULGILBAR ALICIA
DAM: YULGILBAR N217
 MULTIPLE SIRE
 YULGILBAR K809 (P)
 MULTIPLE DAM

Weight
 ADG
 Scrotal
 Fat P8
 Rib
 Fat Rump
 IMF%
 EMA

Comment:

Lot 6: Unanimous U326 is a poll bull who stands on adequate bone, with a strong, masculine head. He must be commended for his tropical skin type and sire appeal. A bull that is very structurally sound and has an impeccable temperament. U326 displays plenty of length and is long from his hip to pin, with a deep flank and loads of capacity. EBV figures rating in the top 5% for 200, 400 & 600 day growth. His scrotal, carcass weight and EMA in the top 10% make this a well-balanced bull in the top percentiles for the Santa Gertrudis breed.

Purchaser:

\$

YULGILBAR UNITED U156 (PP)

Society ID: YUL23MU156

Born: 5/10/2023

23 Months | Male

WACO YALE E880 (P)	Weight
YARRAWONGA FORMIDABLE L872 (P)	
YARRAWONGA G143	ADG
SIRE: HARDIGREEN PARK VICE ROY N44 (P)	
HARDIGREEN PARK QUO VADIS H118 (PS)	Scrotal
HARDIGREEN PARK L13 (P)	
HARDIGREEN PARK H27 (P)	Fat P8
WATASANTA A GOODEN (P)	Rib
CANOWINDRA KODAK K29 (P)	
QUANDILLA Y35 (P)	Fat Rump
DAM: YULGILBAR J67 (P)	
DUNLOP FRAGGLE (P)	IMF%
YULGILBAR F175	
YULGILBAR Y1183 (P)	EMA

Comment:

Lot 7: United U156 is a large framed, homozygous poll bull, who is very structurally correct. He has plenty of length of body, and he is long from his hip to pin. A bull that displays natural thickness with a strong topline. U156 has a clean underline and good testicles. EBV figures rating in the top 10% for 200, 400 & 600 day growth. His scrotal and carcass weight is in the top 15% which makes this a well-balanced bull in the top percentiles for the Santa Gertrudis breed.

Dam: Canowindra Kodak daughter Yulgilbar J67 (P) has 8 recorded progeny, including her recently weaned V bull calf.

Purchaser:

\$

YULGILBAR UPLOAD U180 (PS)

Society ID: YUL23MU180

Born: 24/10/2023

22 Months | Male

WARENDA DENVER (P)	Weight
WARENDA LENNOX L32 (P)	
WARENDA F13 (P)	ADG
SIRE: MURGONA NIGHTCAP (P)	
DANGARFIELD STRONGHOLD	Scrotal
MURGONA FELICIA F55	
MURGONA DELIGHT	Fat P8
CARDONA MAMBO M33 (P)	Rib
CARDONA PATTERSON P53 (P)	
CARDONA FIREFLY M280 (PS)	Fat Rump
DAM: YULGILBAR Q045 (P)	
TOOKEY CREEK GERONIMO G38 (P)	IMF%
YULGILBAR L097 (P)	
YULGILBAR F055	EMA

Comment:

Lot 8: Upload U180 is a well muscled, poll scurred Murgona Nightcap son who displays plenty of natural thickness and breed character. U180 has plenty of strength of spine, spring of rib and has a good tail.

Purchaser:

\$

YULGILBAR UBER U122 (P)

Society ID: YUL23MU122

Born: 9/10/2023

22 Months | Male

BULLAMAKINKA KONG K276	Weight
DUNLOP TAJ P484 (P)	
MULTIPLE DAM	ADG
SIRE: DARR CREEK SERENGETI S100 (P)	
CANOWINDRA NEBO N48	Scrotal
OAKDALE NATALIE 2032	
OAKDALE IRMA 923	Fat P8
777 VEGAS 411 (P)	Rib
YULGILBAR NEVADA N40 (AI)(P)	
YULGILBAR K145	Fat Rump
DAM: YULGILBAR R185 (P)	
DUNLOP RED HAWKE M614	IMF%
YULGILBAR P025 (P)	
YULGILBAR L155 (P)	EMA

Comment:

Lot 9: Uber U122 is a stylish, dark red, easy doing, poll Serengeti son, who has a quiet temperament and is very clean through his neck and shoulders. Uber is a modern styled bull who must be commended for his sire appeal, tremendous length of body, depth of flank and his very light sheath.

Dam: Yulgilbar R185 (P) has 2 recorded progeny - Uber was her first born. R185 has weaned a V heifer calf earlier this year and has preg tested back in calf.

Purchaser:

\$



LOT 1



LOT 2



LOT 3



LOT 4



LOT 5



LOT 6



LOT 7



LOT 8

YULGILBAR ULTIMATE U88 (PP)

Society ID: YUL23MU88

Born: 23/8/2023

24 Months | Male

MULTIPLE SIRE
YARRAWONGA P918 (PP)
MULTIPLE DAM
SIRE: DIAMOND H YARRAMAN Y064 (P)
WACO WRANGLER (P)
DIAMOND H R322 (P)
DIAMOND H K026

MULTIPLE SIRE

DAM: KEMMIS 0166

MULTIPLE DAM

Weight

ADG

Scrotal

Fat P8

Rib

Fat Rump

IMF%

EMA

Comment:

Lot 10: Ultimate U88 is a very quiet natured, homozygous poll bull. He is a good fleshing, early maturing, easy doing bull, who demonstrates plenty of muscling. A bull who displays length of body, spring of rib and is dark in colour.

Dam: Kemmis 0166 – Yulgilbar purchased the dam from Kemmis Santa Gertrudis (Ross Grazing Company). Ultimate was her first born calf. 0166 weaned a V heifer calf earlier this year and has preg tested back in calf.

Purchaser:

\$

YULGILBAR UPTON U154 (P)

Society ID: YUL23MU154

Born: 23/11/2023

21 Months | Male

WACO YALE E880 (P)
YARRAWONGA FORMIDABLE L872 (P)
YARRAWONGA G143
SIRE: HARDIGREEN PARK VICE ROY N44 (P)
HARDIGREEN PARK QUO VADIS H118 (PS)
HARDIGREEN PARK L13 (P)
HARDIGREEN PARK H27 (P)
WALMONA SINCLAIR 1212 (P)
IDEAL NEPTUNE N78 (P)
IDEAL IRELAND I22
DAM: YULGILBAR N071
HARDIGREEN PARK NAUTILUS (P)
YULGILBAR K043 (P)
YULGILBAR G077 (P)

Weight

ADG

Scrotal

Fat P8

Rib

Fat Rump

IMF%

EMA

Comment:

Lot 11: Upton U154 is a poll Vice Roy son who has a strong masculine head with plenty of sire appeal. He displays great length of body and he is strong over his topline. U154 has a clean underline, tidy sheath and good testicles. EBV for scrotal puts him in the top 1% for the breed, combined with 400 & 600 day growth in the top 10% & 15% respectively.

Dam: Yulgilbar N071 has 3 calves recorded.

Grand Dam: Yulgilbar K043 is the dam of Yulgilbar Parramatta P130 (PS) who topped the Yulgilbar Production Sale in 2020.

Purchaser:

\$

YULGILBAR USHER U200 (P)

Society ID: YUL23MU200

Born: 8/12/2023

20 Months | Male

CARDONA JACKSON
CARDONA MAMBO M33 (P)
CARDONA JASMINE J180 (P)
SIRE: CARDONA PATTERSON P53 (P)
WACO TREATY (P)
CARDONA FIREFLY M280 (PS)
CARDONA FIREFLY I124
WIGHTFIELDS ZINZAN G43 (P)
MOONGANA KARACHI 2724 (P)
MOONGANA B1449
DAM: YULGILBAR P109 (P)
WARENDA SAHARA (P)
YULGILBAR K007 (AI)(P)
YULGILBAR G193

Weight

ADG

Scrotal

Fat P8

Rib

Fat Rump

IMF%

EMA

Comment:

Lot 12: Usher U200 is one of the youngest poll sires in the sale draft. A Patterson son who has plenty of sire appeal and breed character, with a tropical skin type. A very easy doing, young bull that displays plenty of softness, natural thickness and is structurally correct.

Dam: Yulgilbar P109 (P) has 3 recorded calves.

Purchaser:

\$

YULGILBAR UPPER CLARENCE U252 (P)

Society ID: YUL24MU252

Born: 3/1/2024

20 Months | Male

MULTIPLE SIRE
WACO ADDICTIVE F1090 (PS)
WACO D1003 (P)
SIRE: WACO QUEENSLANDER Q384 (PS)

MULTIPLE SIRE
YARRAWONGA H275 (P)
YARRAWONGA X687

CARDONA MAMBO M33 (P)
CARDONA PATTERSON P53 (P)
CARDONA FIREFLY M280 (PS)
DAM: YULGILBAR Q015 (P)
TOOKEY CREEK GERONIMO G38 (P)
YULGILBAR M037 (P)
YULGILBAR E065

Weight

ADG

Scrotal

Fat P8

Rib

Fat Rump

IMF%

EMA

Comment:

Lot 13: Upper Clarence U252 is a tropical skinned, poll bull that should not be overlooked. U252 is the youngest bull in the sale draft who shows plenty of softness and loose skin, with a deep flank and great length from his hip to pin.

Dam: Yulgilbar Q015 (P) has had 2 calves and had a bull sell in the sale last year.

Purchaser:

\$

YULGILBAR ULTRA U120 (P)

Society ID: YUL23MU120

Born: 30/7/2023

25 Months | Male

BULLAMAKINKA KONG K276
DUNLOP TAJ P484 (P)
MULTIPLE DAM
SIRE: DARR CREEK SERENGETI S100 (P)

CANOWINDRA NEBO N48
OAKDALE NATALIE 2032
OAKDALE IRMA 923

CO/OP 3/9 (P)
YULGILBAR CO-OP J18 (AI)
YULGILBAR F159
DAM: YULGILBAR R211 (P)
SANTALANDS ZELMAN (P)
YULGILBAR E301 (P)
YULGILBAR A87

Weight

ADG

Scrotal

Fat P8

Rib

Fat Rump

IMF%

EMA

Comment:

Lot 14: Ultra U120 is a clean fronted, poll bull who is quiet natured. U120 stands on adequate bone, has length of body and long from his hip to pin.

Dam: Yulgilbar R211 (P) has 2 calves recorded, with Ultra being her first born. She weaned a V bull calf earlier this year and has preg tested back in calf.

Purchaser:

\$

YULGILBAR UNIT U56 (PP)

Society ID: YUL23MU56

Born: 9/10/2023

22 Months | Male

WACO THE DON J1156 (P)
YARRAWONGA IRONMAN P914 (PP)
MULTIPLE DAM
SIRE: WATASANTA STETSON 2796 (PS)
CANOWINDRA IN THE GROOVE (P)
WATASANTA 1525
KILLARNEY 52

WACO EINSTEIN K808 (P)
TOOKEY CREEK MALTA (P)
TOOKEY CREEK J59 (P)

DAM: YULGILBAR R153 (P)
777 VEGAS 411 (P)
YULGILBAR N057 (AI)(P)
YULGILBAR K181 (P)

Weight

ADG

Scrotal

Fat P8

Rib

Fat Rump

IMF%

EMA

Comment:

Lot 15: Unit U56 is a homozygous poll bull who displays a strong topline and stands on very good bone. U56 has a great underline, quiet temperament and good testicles.

Dam: Yulgilbar R153 (P) has had 2 calves, with Unit being her first born. She weaned a V bull calf earlier this year and has preg tested back in calf.

Purchaser:

\$



LOT 9



LOT 10



LOT 11



LOT 12



LOT 13



LOT 14



LOT 15



LOT 16

Yulgilbar Genetics Commercial Female Sale **February 2026**



YULGILBAR UTILITY U270 (PS)

Society ID: YUL23MU270
Born: 19/11/2023
21 Months | Male

WACO THE DON J1156 (P)	Weight
YARRAWONGA IRONMAN P914 (PP)	
MULTIPLE DAM	ADG
SIRE: WATASANTA STETSON 2796 (PS)	
CANOWINDRA IN THE GROOVE (P)	Scrotal
WATASANTA 1525	
KILLARNEY 52	Fat P8
CO/OP 3/9 (P)	Rib
YULGILBAR CO-OP J18 (AI)	
YULGILBAR F159	Fat Rump
DAM: YULGILBAR R267 (P)	
WARENDA SAHARA (P)	IMF%
YULGILBAR J244 (P)	
YULGILBAR X137 (P)	EMA

Comment:
Lot 16: Utility U270 is a poll scurred, structurally sound bull. This bull has a good length of body, a strong topline and displays length from his hip to pin. A bull that has a clean, tidy sheath and a good temperament.

Purchaser: _____

\$ _____

YULGILBAR UPHOLD U74 (PS)

Society ID: YUL23MU74
Born: 16/8/2023
24 Months | Male

WACO THE DON J1156 (P)	Weight
YARRAWONGA IRONMAN P914 (PP)	
MULTIPLE DAM	ADG
SIRE: WATASANTA STETSON 2796 (PS)	
CANOWINDRA IN THE GROOVE (P)	Scrotal
WATASANTA 1525	
KILLARNEY 52	Fat P8
WACO EINSTEIN K808 (P)	Rib
TOOKEY CREEK MALTA (P)	
TOOKEY CREEK J59 (P)	Fat Rump
DAM: YULGILBAR R51 (P)	
TOOKEY CREEK GERONIMO G38 (P)	IMF%
YULGILBAR M037 (P)	
YULGILBAR E065	EMA

Comment:
Lot 17: Uphold U74 is a poll scurred bull who has a tropical skin type and a good temperament. He is a bull that displays plenty of depth, doing ability and he has a strong topline.

Purchaser: _____

\$ _____

YULGILBAR UNO U58 (P)

Society ID: YUL23MU58
Born: 26/8/2023
24 Months | Male

WACO THE DON J1156 (P)	Weight
YARRAWONGA IRONMAN P914 (PP)	
MULTIPLE DAM	ADG
SIRE: WATASANTA STETSON 2796 (PS)	
CANOWINDRA IN THE GROOVE (P)	Scrotal
WATASANTA 1525	
KILLARNEY 52	Fat P8
WACO EINSTEIN K808 (P)	Rib
TOOKEY CREEK MALTA (P)	
TOOKEY CREEK J59 (P)	Fat Rump
DAM: YULGILBAR R43 (P)	
MULTIPLE SIRE	IMF%
YULGILBAR M205	
YULGILBAR H91 (P)	EMA

Comment:
Lot 18: UNO U58 is a poll bull who displays plenty of softness and a tidy underline. He is structurally sound with plenty of length, volume and capacity.

Purchaser: _____

\$ _____

YULGILBAR UFO U172 (P)

Society ID: YUL23MU172

Born: 18/8/2023

24 Months | Male

WACO YALE E880 (P)	Weight
YARRAWONGA FORMIDABLE L872 (P)	
YARRAWONGA G143	ADG
SIRE: HARDIGREEN PARK VICE ROY N44 (P)	
HARDIGREEN PARK QUO VADIS H118 (PS)	Scrotal
HARDIGREEN PARK L13 (P)	
HARDIGREEN PARK H27 (P)	Fat P8
CARDONA MAMBO M33 (P)	Rib
CARDONA PATTERSON P53 (P)	
CARDONA FIREFLY M280 (PS)	Fat Rump
DAM: YULGILBAR P101 (P)	
MULTIPLE SIRE	IMF%
YULGILBAR J29 (P)	
MULTIPLE DAM	EMA

Comment:

Lot 19: UFO U172 is a large framed, later maturing, poll bull who shows good strength of spine and a tidy underline. He has an EBV for his scrotal in the top 5%, 200 and 400 day growth in the top 10%, combined with an EMA in the top 15%. These EBV's make this a well balanced sire prospect.

Dam: Yulgilbar P101 (P) has 4 calves recorded.

Purchaser:

\$

YULGILBAR UPSTATE U32 (PS)

Society ID: YUL23MU32

Born: 2/7/2023

26 Months | Male

TYNDALE ENERGISER (PS)	Weight
ROCKINGHAM JOKER J100 (PS)	
ROCKINGHAM B29 (P)	ADG
SIRE: ROCKINGHAM PREDICTOR P52 (P)	
MUNNABAH 400	Scrotal
ROCKINGHAM F99	
ROCKINGHAM V17 (P)	Fat P8
CARDONA MAMBO M33 (P)	Rib
CARDONA PATTERSON P53 (P)	
CARDONA FIREFLY M280 (PS)	Fat Rump
DAM: YULGILBAR P169 (P)	
YULGILBAR COUNCILLOR (AI)(P)	IMF%
YULGILBAR J191 (P)	
MULTIPLE DAM	EMA

Comment:

Lot 20: Upstate U32 is a dark red, large frame, poll scurred bull. He has a good head, adequate bone and has plenty of length, volume and capacity.

Dam: Yulgilbar P169 (P) has 4 calves recorded and has preg tested back in calf.

Purchaser:

\$

YULGILBAR UNTOUCHABLE U62 (PP)

Society ID: YUL23MU62

Born: 20/8/2023

24 Months | Male

WACO THE DON J1156 (P)	Weight
YARRAWONGA IRONMAN P914 (PP)	
MULTIPLE DAM	ADG
SIRE: WATASANTA STETSON 2796 (PS)	
CANOWINDRA IN THE GROOVE (P)	Scrotal
WATASANTA 1525	
KILLARNEY 52	Fat P8
MULTIPLE SIRE	Rib
CARDONA Q271 (P)	
KYROAN 831	Fat Rump
DAM: YULGILBAR R141 (P)	
MULTIPLE SIRE	IMF%
YULGILBAR K1379	
MULTIPLE DAM	EMA

Comment:

Lot 21: Untouchable U62 is a homozygous poll bull, who displays unbelievable strength of spine, volume and capacity. A Watasanta Stetson son who is free moving, with natural muscling and good length from his hip to pin.

Dam: Yulgilbar R141 (P) has had 2 calves, with Untouchable being her first born. She weaned a V heifer calf earlier this year and has preg tested back in calf.

Purchaser:

\$

YULGILBAR UNCANNY U106 (P)

Society ID: YUL23MU106

Born: 17/7/2023

25 Months | Male

BULLAMAKINKA KONG K276
DUNLOP TAJ P484 (P)
MULTIPLE DAM
SIRE: DARR CREEK SERENGETI S100 (P)
CANOWINDRA NEBO N48
OAKDALE NATALIE 2032
OAKDALE IRMA 923

DAM: YULGILBAR CLASSIFIED DAM

Weight
ADG
Scrotal
Fat P8
Rib
Fat Rump
IMF%
EMA

Comment:

Lot 22: Uncanny U106 is a poll Serengeti son who displays plenty of power and punch. He has great length of body, a quiet nature and length from hip to pin.

Purchaser:

\$

YULGILBAR ULTIMO U100

Society ID: YUL23MU100

Born: 4/8/2023

25 Months | Male

BULLAMAKINKA KONG K276
DUNLOP TAJ P484 (P)
MULTIPLE DAM
SIRE: DARR CREEK SERENGETI S100 (P)
CANOWINDRA NEBO N48
OAKDALE NATALIE 2032
OAKDALE IRMA 923

777 VEGAS 411 (P)
YULGILBAR NEVADA N40 (AI)(P)
YULGILBAR K145
DAM: YULGILBAR R175 (P)
CARDONA PATTERSON P53 (P)
YULGILBAR P101 (P)
YULGILBAR J29 (P)

Weight
ADG
Scrotal
Fat P8
Rib
Fat Rump
IMF%
EMA

Comment:

Lot 23: Ultimo U100 is the first horned, Serengeti son in the sale. This bull oozes sire appeal with a strong, broad, masculine head and a hooded eye. This bull stands on heavy bone and has a tropical skin type. Ultimo is a free moving, deep sided sire, who exhibits a tremendous amount of length, volume and capacity.

Dam: Yulgilbar R175 (P) has 2 calves recorded with Ultimo being her first born and has preg tested back in calf.

Purchaser:

\$

YULGILBAR UPROAR U190

Society ID: YUL23MU190

Born: 30/7/2023

25 Months | Male

WACO YALE E880 (P)
YARRAWONGA FORMIDABLE L872 (P)
YARRAWONGA G143
SIRE: HARDIGREEN PARK VICE ROY N44 (P)
HARDIGREEN PARK QUO VADIS H118 (PS)
HARDIGREEN PARK L13 (P)
HARDIGREEN PARK H27 (P)

WACO YARRABIN (P)
CARDONA NARDOO N249 (PS)
CARDONA J56
DAM: YULGILBAR N263 (P)
YARRAWONGA WALLABY (P)
YULGILBAR F185
YULGILBAR Y1119

Weight
ADG
Scrotal
Fat P8
Rib
Fat Rump
IMF%
EMA

Comment:

Lot 24: Uproar U190 is a horned, easy-doing, soft bull that is structurally sound, with a quiet nature. U190 is a thick, deep bull who displays loads of volume and capacity.

Dam: Yulgilbar N263 (P) has 4 calves recorded including the V heifer calf that was weaned earlier this year.

Purchaser:

\$



LOT 17



LOT 18



LOT 19



LOT 21



LOT 23



LOT 24



LOT 25



LOT 26

YULGILBAR UPTOWN U182

Society ID: YUL23MU182

Born: 21/10/2023

22 Months | Male

WACO YALE E880 (P)	Weight
YARRAWONGA FORMIDABLE L872 (P)	
YARRAWONGA G143	ADG
SIRE: HARDIGREEN PARK VICE ROY N44 (P)	
HARDIGREEN PARK QUO VADIS H118 (PS)	Scrotal
HARDIGREEN PARK L13 (P)	
HARDIGREEN PARK H27 (P)	Fat P8
SUJO FIRST CLASS (AI)(P)	Rib
BENELKAY JUMBO JIM J002 (PP)	
BENELKAY JEWEL 1529 (P)	Fat Rump
DAM: YULGILBAR N205 (P)	
ROSEVALE NODDY D216 (PS)	IMF%
YULGILBAR F181 (P)	
THE LAKES P206 (AI)(P)	EMA

Comment:

Lot 25: Uptown U182 is a horned bull that has a tropical skin, clean underline, strong topline and good testicles.

Dam: Yulgilbar N205 (P) has had 4 calves including the V bull calf that was weaned earlier this year. Uptown is out of the same dam as Tick Tick Boom T4 (P), who sold as Lot 1 in last year's production sale.

Purchaser:

\$

YULGILBAR UNGUARDED U222

Society ID: YUL23MU222

Born: 1/10/2023

23 Months | Male

HARDIGREEN PARK PHOENIX G154 (P)	Weight
VALLEYVIEW LUKE 1546 (P)	
VALLEYVIEW 1359	ADG
SIRE: DUNLOP UNGUARDED Q162 (P)	
YARRAWONGA YARDSTICK	Scrotal
DUNLOP H69	
DUNLOP C1055	Fat P8
MULTIPLE SIRE	Rib
	Fat Rump
DAM: YULGILBAR M197	
WARENDA SAHARA (P)	IMF%
YULGILBAR D163 (AI)(P)	
YULGILBAR B153	EMA

Comment:

Lot 26: Unguarded U222 is a horned bull who displays natural muscling and softness. He is commended for his length of body, strength of spine, spring of rib and his dark, red colour.

Dam: Yulgilbar M197 has had 6 calves including the V heifer calf that was weaned earlier this year and has been preg tested back in calf. 4 of which are all classified progeny. U222 had a half brother sell in the sale last year.

Grand Dam: Yulgilbar D163 (AI)(P) is a Warena Sahara daughter who has 7 calves recorded.

Purchaser:

\$

YULGILBAR USAIN U166

Society ID: YUL23MU166

Born: 6/12/2023

20 Months | Male

WARENDA DENVER (P)	Weight
WARENDA LENNOX L32 (P)	
WARENDA F13 (P)	ADG
SIRE: MURGONA NIGHTCAP (P)	
DANGARFIELD STRONGHOLD	Scrotal
MURGONA FELICIA F55	
MURGONA DELIGHT	Fat P8
WACO F268 (ET)	Rib
YARRAWONGA DROVER J586 (P)	
WACO AUTUMN G1017 (ET)	Fat Rump
DAM: YULGILBAR Q161 (P)	
DUNLOP FRAGGLE (P)	IMF%
YULGILBAR F159	
THE LAKES J251	EMA

Comment:

Lot 27: Usain U166 is a thick, horned bull who is structurally sound and correct, with a tidy sheath. U166 is one of the youngest bulls in the sale draft and he is the ultimate carcass bull, with heavy muscling and a great hindquarter.

Dam: Yulgilbar Q161 (P) has had 2 calves including Yulgilbar Texas Ranger T30, who was retained last year for stud duties.

Grand Dam: Yulgilbar F159 is a Dunlop Fraggles daughter who has 11 progeny, including the V bull calf that was weaned earlier this year. Yulgilbar retained one of her sons, Yulgilbar Co - Op J18 (AI) who was used as a sire within the stud.

Purchaser:

\$

YULGILBAR UMAR U194

Society ID: YUL23MU194
Born: 16/10/2023
22 Months | Male

WACO YALE E880 (P)	Weight
YARRAWONGA FORMIDABLE L872 (P)	
YARRAWONGA G143	ADG
SIRE: HARDIGREEN PARK VICE ROY N44 (P)	
HARDIGREEN PARK QUO VADIS H118 (PS)	Scrotal
HARDIGREEN PARK L13 (P)	
HARDIGREEN PARK H27 (P)	Fat P8
CARDONA MAMBO M33 (P)	Rib
CARDONA PATTERSON P53 (P)	
CARDONA FIREFLY M280 (PS)	Fat Rump
DAM: YULGILBAR P75 (P)	
HARDIGREEN PARK NAUTILUS (P)	IMF%
YULGILBAR J219 (P)	
YULGILBAR E065	EMA

Comment:

Lot 28: Umar U194 is a deep bodied, structurally sound, quiet natured horned bull. He has a tropical skin type, long tail, clean underline and carries plenty of volume and capacity. Growth, scrotal and carcass fat traits are all rating in the top 10% for the Santa Gertrudis breed.

Dam: Yulgilbar P75 (P) has had 5 calves including her V calf that was weaned earlier this year.

Purchaser:

\$

YULGILBAR UNITED KINGDOM U318 (P)

Society ID: YUL23MU318
Born: 20/10/2023
22 Months | Male

BULLAMAKINKA KONG K276	Weight
DUNLOP TAJ P484 (P)	
MULTIPLE DAM	ADG
SIRE: DARR CREEK SERENGETI S100 (P)	
CANOWINDRA NEBO N48	Scrotal
OAKDALE NATALIE 2032	
OAKDALE IRMA 923	Fat P8
777 VEGAS 411 (P)	Rib
YULGILBAR NEVADA N40 (AI)(P)	
YULGILBAR K145	Fat Rump
DAM: YULGILBAR R183 (P)	
CARDONA PATTERSON P53 (P)	IMF%
YULGILBAR P107 (P)	
YULGILBAR J47 (P)	EMA

Comment:

Lot 29: United Kingdom U318 is a poll Serengeti son, who has a masculine head with plenty of sire appeal. A bull that is structurally sound, with a tropical skin type and very docile. U318 oozes softness, depth and length of body.

Purchaser:

\$

YULGILBAR ULURU U82 (P)

Society ID: YUL23MU82
Born: 15/7/2023
25 Months | Male

MULTIPLE SIRE	Weight
SIRE: KEMMIS NEBO 902 (P)	ADG
MULTIPLE DAM	Scrotal
	Fat P8
MULTIPLE SIRE	Rib
DAM: KEMMIS 0170	Fat Rump
	IMF%
MULTIPLE DAM	EMA

Comment:

Lot 30: Uluru U82 is a moderate framed poll bull, with an early maturity pattern, who is a full outcross to any Yulgilbar genetics. He is a thick, easy doing carcass bull, who has a very quiet temperament.

Dam: Kemmis 0170 is a female that Yulgilbar purchased from Kemmis Santa Gertrudis (Ross Grazing Company). Uluru was her first born calf. 0170 had a V bull calf weaned from her earlier this year and has preg tested back in calf.

Sire: Kemmis Nebo 902 (PP) was purchased from Kemmis Santa Gertrudis (Ross Grazing Company), and Uluru was one of his first progeny.

Purchaser:

\$

YULGILBAR UKI U90 (P)

Society ID: YUL23MU90

Born: 31/8/2023

24 Months | Male

MULTIPLE SIRE
YARRAWONGA P918 (PP)
MULTIPLE DAM
SIRE: DIAMOND H YARRAMAN Y064 (P)
WACO WRANGLER (P)
DIAMOND H R322 (P)
DIAMOND H K026

MULTIPLE SIRE
DAM: YULGILBAR R1411 (P)

MULTIPLE DAM

Weight

ADG

Scrotal

Fat P8

Rib

Fat Rump

IMF%

EMA

Comment:

Lot 31: Uki U90 is a structurally sound poll bull, who displays natural softness and easy doing ability. He is an early maturing bull that has a quiet temperament and a tropical skin type.

Dam: Yulgilbar R1411 (P) has 2 calves recorded including her V heifer calf that was weaned this year and she has preg tested back in calf. Uki is her first born calf.

Purchaser:

\$

YULGILBAR UNITY U262 (P)

Society ID: YUL23MU262

Born: 27/11/2023

21 Months | Male

MULTIPLE SIRE
YARRAWONGA P918 (PP)
MULTIPLE DAM
SIRE: DIAMOND H YARRAMAN Y064 (P)
WACO WRANGLER (P)
DIAMOND H R322 (P)
DIAMOND H K026

MULTIPLE SIRE
CARDONA Q271 (P)
KYROAN 831
DAM: YULGILBAR R205 (P)

MULTIPLE SIRE
YULGILBAR K851 (P)
MULTIPLE DAM

Weight

ADG

Scrotal

Fat P8

Rib

Fat Rump

IMF%

EMA

Comment:

Lot 32: Unity U262 is a dark red, poll, early maturing bull who is well muscled. One of the youngest bulls in this years sale draft, who is structurally sound and has plenty of spring of rib.

Dam: Yulgilbar R205 (P) has 2 calves recorded including her V bull calf that was weaned earlier this year and she has preg tested back in calf.

Grand Dam: Yulgilbar K851 (P) has 8 recorded progeny including her V bull calf that was weaned earlier this year and she has also preg tested back in calf.

Purchaser:

\$

YULGILBAR UNITED STATES U144 (PP)

Society ID: YUL23MU144

Born: 20/11/2023

21 Months | Male

YARRAWONGA ARCHER G280
GLENN OAKS JIBBA J28 (P)
WACO A493
SIRE: JAMAR STUNTMAN S16 (AI)(P)
PAMPOOLA 127T
PAMPOOLA 732A
PAMPOOLA 249F

SJ HIGH ROLLER 005
777 VEGAS 411 (P)
HARRIS FARMS 17/01
DAM: YULGILBAR N035 (AI)(P)
WARENDA SAHARA (P)
YULGILBAR K005 (AI)(P)
YULGILBAR G053

Weight

ADG

Scrotal

Fat P8

Rib

Fat Rump

IMF%

EMA

Comment:

Lot 33: United States U144 is a homozygous poll Stuntman son who stands on good bone and has a very quiet nature. This bull is one of the youngest bulls in this years sale draft who has a desirable length of body, strong topline, clean underline and an early maturity pattern. Exceptional EBV figures, rating in the top 1% for 200 & 600 day growth. This bull is also in the top 5% for carcass weight.

Dam: Yulgilbar N035 (AI)(P) is a 777 Vegas daughter who has 5 recorded progeny including the V heifer calf that was weaned earlier this year and she has preg tested back in calf. N035 had a son sell in the sale last year as lot 4, for \$26,000.

Purchaser:

\$

YULGILBAR U ROCK U138 (P)

Society ID: YUL23MU138

Born: 17/11/2023

21 Months | Male

YARRAWONGA ARCHER G280
GLENN OAKS JIBBA J28 (P)
WACO A493
SIRE: JAMAR STUNTMAN S16 (AI)(P)
PAMPOOLA 127T
PAMPOOLA 732A
PAMPOOLA 249F
SJ HIGH ROLLER 005
777 VEGAS 411 (P)
HARRIS FARMS 17/01
DAM: YULGILBAR N057 (AI)(P)
YULGILBAR COUNCILLOR (AI)(P)
YULGILBAR K181 (P)
YULGILBAR V120

Weight
ADG
Scrotal
Fat P8
Rib
Fat Rump
IMF%
EMA

Comment:

Lot 34: U Rock U138 is a dark red, early maturing, poll bull who has a strong topline. The ideal carcass bull, who displays natural thickness and has a very quiet nature.

Dam: Yulgilbar N057 (AI)(P) is 777 Vegas daughter who has 4 recorded progeny.

Grand Dam: Yulgilbar K181 (P) has 8 recorded progeny including her V bull calf that was weaned earlier this year and she has preg tested back in calf. K181 had a son sell in the last years production sale.

Purchaser:

\$

YULGILBAR UFC U96 (P)

Society ID: YUL23MU96

Born: 22/8/2023

24 Months | Male

MULTIPLE SIRE
YARRAWONGA P918 (PP)
MULTIPLE DAM
SIRE: DIAMOND H YARRAMAN Y064 (P)
WACO WRANGLER (P)
DIAMOND H R322 (P)
DIAMOND H K026
MULTIPLE SIRE
CARDONA Q271 (P)
KYROAN 831
DAM: YULGILBAR R199 (P)
YARRAWONGA WALLABY (P)
YULGILBAR H205
YULGILBAR Y1791

Weight
ADG
Scrotal
Fat P8
Rib
Fat Rump
IMF%
EMA

Comment:

Lot 35: UFC U96 is another poll, early maturing carcass bull who demonstrates natural muscling and thickness. UFC has a dark red coat with a tropical skin type.

Dam: Yulgilbar R199 (P) has 2 calves recorded, including her V heifer calf that was weaned earlier this year and she has preg tested back in calf.

Grand Dam: Yulgilbar H205, a Yarrowonga Wallaby daughter has 9 recorded progeny including her V heifer calf that was weaned earlier this year.

Purchaser:

\$

YULGILBAR UPPERCUT U94 (PS)

Society ID: YUL23MU94

Born: 15/10/2023

22 Months | Male

MULTIPLE SIRE
YARRAWONGA P918 (PP)
MULTIPLE DAM
SIRE: DIAMOND H YARRAMAN Y064 (P)
WACO WRANGLER (P)
DIAMOND H R322 (P)
DIAMOND H K026
MULTIPLE SIRE
CARDONA Q271 (P)
KYROAN 831
DAM: YULGILBAR R159
TARA MONARCH
YULGILBAR C221
YULGILBAR X15

Weight
ADG
Scrotal
Fat P8
Rib
Fat Rump
IMF%
EMA

Comment:

Lot 36: Uppercut U94 is a thick, early maturing poll scurred bull who displays plenty of carcass characteristics. A bull that stands on good bone, structurally sound and has a quiet temperament.

Dam: Yulgilbar R159 has 2 recorded calves, with U94 being her first.

Grand Dam: Yulgilbar C221 had 10 recorded progeny.

Purchaser:

\$



YULGILBAR UPGRADE U130 (P)

Society ID: YUL23MU130

Born: 3/10/2023

23 Months | Male

BULLAMAKINKA KONG K276
DUNLOP TAJ P484 (P)
MULTIPLE DAM
SIRE: DARR CREEK SERENGETI S100 (P)
CANOWINDRA NEBO N48
OAKDALE NATALIE 2032
OAKDALE IRMA 923

WACO ELAND J1402 (P)
GLENN OAKS MOMBASA M96 (P)
WACO G153 (P)
DAM: YULGILBAR R201 (P)
TALGAI HURRICANE H126 (P)
YULGILBAR L087 (P)
THE LAKES N202

Weight
ADG
Scrotal
Fat P8
Rib
Fat Rump
IMF%
EMA

Comment:

Lot 37: Upgrade U130 is a poll Serengeti son who stands on good bone and has great breed characteristics. A bull who displays plenty of length, smooth muscling, width over his topline and he has a good tail set.

Dam: Yulgilbar R201 (P) has 2 recorded calves, with U130 being her first born.

Purchaser:

\$

YULGILBAR ULMARRA U170 (P)

Society ID: YUL23MU170

Born: 26/11/2023

21 Months | Male

CARDONA JACKSON
CARDONA MAMBO M33 (P)
CARDONA JASMINE J180 (P)
SIRE: CARDONA PATTERSON P53 (P)
WACO TREATY (P)
CARDONA FIREFLY M280 (PS)
CARDONA FIREFLY I124

NUNGAROI UTOPIA (P)
CANOWINDRA JAG J26 (PS)
CANOWINDRA A173
DAM: YULGILBAR P023 (P)
DANGARFIELD WHIP CRACKER W211 (PS)
YULGILBAR L133 (P)
YULGILBAR E219 (AI)

Weight
ADG
Scrotal
Fat P8
Rib
Fat Rump
IMF%
EMA

Comment:

Lot 38: Ulmarra U170 is a polled Patterson son who has a tropical outlook and stands on adequate bone. A bull that has a clean underline and quiet nature.

Purchaser:

\$

YULGILBAR ULTIMUS U44 (P)

Society ID: YUL23MU44

Born: 2/11/2023

22 Months | Male

TYNDALE ENERGISER (PS)
ROCKINGHAM JOKER J100 (PS)
ROCKINGHAM B29 (P)
SIRE: ROCKINGHAM PREDICTOR P52 (P)
MUNNABAH 400
ROCKINGHAM F99
ROCKINGHAM V17 (P)

WACO F268 (ET)
YARRAWONGA DROVER J586 (P)
WACO AUTUMN G1017 (ET)
DAM: YULGILBAR P131 (P)
WARENDA SAHARA (P)
YULGILBAR G055 (P)
YULGILBAR B107

Weight
ADG
Scrotal
Fat P8
Rib
Fat Rump
IMF%
EMA

Comment:

Lot 39: Ultimus U44 is a large framed, later maturing poll bull. U44 presents himself as a bull that has plenty of volume, depth and capacity with a clean sheath.

Purchaser:

\$

YULGILBAR ULRICK U10 (PS)

Society ID: YUL23MU10

Born: 28/8/2023

24 Months | Male

TYNDALE ENERGISER (PS)
 ROCKINGHAM JOKER J100 (PS)
 ROCKINGHAM B29 (P)
SIRE: ROCKINGHAM PREDICTOR P52 (P)
 MUNNABAH 400
 ROCKINGHAM F99
 ROCKINGHAM V17 (P)
 WILGARON JESTER (AI)(P)
 WAREDA SAHARA (P)
 WAREDA K121 (P)
DAM: YULGILBAR N191 (AI)(P)
 MULTIPLE SIRE
 YULGILBAR K1027
 MULTIPLE DAM

Weight
 ADG
 Scrotal
 Fat P8
 Rib
 Fat Rump
 IMF%
 EMA

Comment:

Lot 40: Ulrick U10 is a large framed, later maturing poll scurred bull, who has plenty of volume and capacity, with a clean sheath.

Purchaser:

\$

YULGILBAR UNICORN U158 (PP)

Society ID: YUL23MU158

Born: 21/11/2023

21 Months | Male

DUNLOP QUENTIN L134
 BULLAMAKINKA P184 (PS)
 BULLAMAKINKA K401
SIRE: DUNLOP WARRATAH S306 (PS)
 BULLAMAKINKA KONG K276
 DUNLOP N263
 DUNLOP H327 (P)
 MULTIPLE SIRE
DAM: YULGILBAR P1073
 MULTIPLE DAM

Weight
 ADG
 Scrotal
 Fat P8
 Rib
 Fat Rump
 IMF%
 EMA

Comment:

Lot 41: Unicorn U158 is a dark red, homozygous poll Serengeti son who displays natural thickness, good spring of rib and stands on plenty of bone.

Purchaser:

\$

YULGILBAR UNDERGO U176 (P)

Society ID: YUL23MU176

Born: 5/11/2023

22 Months | Male

CARDONA JACKSON
 CARDONA MAMBO M33 (P)
 CARDONA JASMINE J180 (P)
SIRE: CARDONA PATTERSON P53 (P)
 WACO TREATY (P)
 CARDONA FIREFLY M280 (PS)
 CARDONA FIREFLY I124
 WIGHTFIELDS ZINZAN G43 (P)
 MOONGANA KARACHI 2724 (P)
 MOONGANA B1449
DAM: YULGILBAR P153 (P)
 YULGILBAR GRANGE G032 (PS)
 YULGILBAR K163 (P)
 YULGILBAR B21 (AI)

Weight
 ADG
 Scrotal
 Fat P8
 Rib
 Fat Rump
 IMF%
 EMA

Comment:

Lot 42: Undergo U176 is a deep sided, tropical skinned, poll bull who has a strong topline.

Dam: Yulgilbar P153 (P) has 4 recorded progeny.

Grand Dam: Yulgilbar K163 (P) has 6 recorded progeny.

Purchaser:

\$

YULGILBAR UNKNOWN U68 (PP)

Society ID: YUL23MU68
Born: 1/10/2023
23 Months | Male

WACO THE DON J1156 (P)	Weight
YARRAWONGA IRONMAN P914 (PP)	
MULTIPLE DAM	ADG
SIRE: WATASANTA STETSON 2796 (PS)	
CANOWINDRA IN THE GROOVE (P)	Scrotal
WATASANTA 1525	
KILLARNEY 52	Fat P8
WACO EINSTEIN K808 (P)	Rib
TOOKEY CREEK MALTA (P)	
TOOKEY CREEK J59 (P)	Fat Rump
DAM: YULGILBAR R119 (P)	
GLENN OAKS JABBA J24 (P)	IMF%
YULGILBAR N099 (P)	
YULGILBAR K149	EMA

Comment:
Lot 43: Unknown U68 is a homozygous poll Stetson son, who displays good breed characteristics. U68 is a large framed, later maturing bull who has plenty of body length and a tropical coat type.

Purchaser: _____

\$ _____

YULGILBAR UKATO U76 (PP)

Society ID: YUL23MU76
Born: 14/7/2023
25 Months | Male

WACO THE DON J1156 (P)	Weight
YARRAWONGA IRONMAN P914 (PP)	
MULTIPLE DAM	ADG
SIRE: WATASANTA STETSON 2796 (PS)	
CANOWINDRA IN THE GROOVE (P)	Scrotal
WATASANTA 1525	
KILLARNEY 52	Fat P8
CO/OP 3/9 (P)	Rib
YULGILBAR CO-OP J18 (AI)	
YULGILBAR F159	Fat Rump
DAM: YULGILBAR R009 (P)	
YARRAWONGA DROVER J586 (P)	IMF%
YULGILBAR L011 (P)	
YULGILBAR H299 (P)	EMA

Comment:
Lot 44: Ukato U76 is a homozygous poll, Stetson son who has a strong topline and is naturally thick, deep and soft.
Dam: Yulgilbar R009 (P) has 2 calves recorded and has preg tested back in calf.

Purchaser: _____

\$ _____

YULGILBAR UNCLE U196 (PP)

Society ID: YUL23MU196
Born: 20/10/2023
22 Months | Male

WACO YALE E880 (P)	Weight
YARRAWONGA FORMIDABLE L872 (P)	
YARRAWONGA G143	ADG
SIRE: HARDIGREEN PARK VICE ROY N44 (P)	
HARDIGREEN PARK QUO VADIS H118 (PS)	Scrotal
HARDIGREEN PARK L13 (P)	
HARDIGREEN PARK H27 (P)	Fat P8
	Rib
MULTIPLE SIRE	
	Fat Rump
DAM: YULGILBAR M1231 (P)	
	IMF%
MULTIPLE DAM	
	EMA

Comment:
Lot 45: Uncle U196 is a homozygous poll son of Hardigreen Park Vice Roy N44 (P) who has a deep flank, strong top and quiet temperament.
Dam: Yulgilbar M1231 (P) has 6 recorded calves and has preg tested back in calf. One of her progeny, T120, was sold in last years production sale.

Purchaser: _____

\$ _____

YULGILBAR USEFUL U186 (P)

Society ID: YUL23MU186

Born: 21/10/2023

22 Months | Male

WACO YALE E880 (P)	Weight
YARRAWONGA FORMIDABLE L872 (P)	
YARRAWONGA G143	ADG
SIRE: HARDIGREEN PARK VICE ROY N44 (P)	
HARDIGREEN PARK QUO VADIS H118 (PS)	Scrotal
HARDIGREEN PARK L13 (P)	
HARDIGREEN PARK H27 (P)	Fat P8
BENELKAY FONZ 741 (P)	Rib
BENELKAY JUNGLE JIM 1254	
BENELKAY 984 (P)	Fat Rump
DAM: YULGILBAR P143	
WARENDA SAHARA (P)	IMF%
YULGILBAR J41 (P)	
YULGILBAR ZARA	EMA

Comment:

Lot 46: Useful U186 is a large framed, poll bull with a dark, red coat. He is structurally sound with a naturally quiet temperament.

Dam: Yulgilbar P143 has 4 recorded calves and she has preg tested back in calf. T10 is one of her son's who sold in the production sale last year.

Purchaser:

\$

YULGILBAR UNDONE U202

Society ID: YUL23MU202

Born: 30/11/2023

21 Months | Male

WACO YALE E880 (P)	Weight
YARRAWONGA FORMIDABLE L872 (P)	
YARRAWONGA G143	ADG
SIRE: HARDIGREEN PARK VICE ROY N44 (P)	
HARDIGREEN PARK QUO VADIS H118 (PS)	Scrotal
HARDIGREEN PARK L13 (P)	
HARDIGREEN PARK H27 (P)	Fat P8
TOOKEY CREEK NAPOLEON (AI)	Rib
TOOKEY CREEK GERONIMO G38 (P)	
G.B.L. A91 (P)	Fat Rump
DAM: YULGILBAR L069 (P)	
SUJO EAGLE	IMF%
YULGILBAR F087	
YULGILBAR Z199	EMA

Comment:

Lot 47: Undone U202 is a horned bull who displays great length of body, a strong topline and is naturally thick, with a tidy underline. A well balanced bull late in the catalogue, who has growth figures rating in the top 10% and carcass fat figures rating in the top 15%.

Dam: Yulgilbar L069 (P) has 6 recorded calves

Grand Dam: Yulgilbar F087 also has 6 recorded calves

Purchaser:

\$

YULGILBAR UNION U64

Society ID: YUL23MU64

Born: 2/8/2023

25 Months | Male

WACO THE DON J1156 (P)	Weight
YARRAWONGA IRONMAN P914 (PP)	
MULTIPLE DAM	ADG
SIRE: WATASANTA STETSON 2796 (PS)	
CANOWINDRA IN THE GROOVE (P)	Scrotal
WATASANTA 1525	
KILLARNEY 52	Fat P8
	Rib
MULTIPLE SIRE	Fat Rump
DAM: YULGILBAR R1423	
	IMF%
MULTIPLE DAM	EMA

Comment:

Lot 48: Union U64 is a horned son of Stetson who carries great length of body, strength of spine and is deep bodied with a clean underline.

Purchaser:

\$

YULGILBAR UPSTANDING U208

Society ID: YUL23MU208

Born: 6/12/2023

20 Months | Male

MULTIPLE SIRE
WACO ADDICTIVE F1090 (PS)
WACO D1003 (P)
SIRE: WACO QUEENSLANDER Q384 (PS)
MULTIPLE SIRE
YARRAWONGA H275 (P)
YARRAWONGA X687

CARDONA MAMBO M33 (P)
CARDONA PATTERSON P53 (P)
CARDONA FIREFLY M280 (PS)
DAM: YULGILBAR Q059
MULTIPLE SIRE
YULGILBAR H233 (P)
YULGILBAR E055 (P)

Weight
ADG
Scrotal
Fat P8
Rib
Fat Rump
IMF%
EMA

Comment:

Lot 49: Upstanding U208 is one of the youngest bulls in the sale draft. He is a dark red, horned bull that displays a tropical coat type, early maturity pattern, strong topline and is structurally correct.

Purchaser:

\$

YULGILBAR UPNORTH U230

Society ID: YUL23MU230

Born: 22/11/2023

21 Months | Male

HARDIGREEN PARK PHOENIX G154 (P)
VALLEYVIEW LUKE 1546 (P)
VALLEYVIEW 1359
SIRE: DUNLOP UNGUARDED Q162 (P)
YARRAWONGA YARDSTICK
DUNLOP H69
DUNLOP C1055

MULTIPLE SIRE
DAM: YULGILBAR P611

MULTIPLE DAM

Weight
ADG
Scrotal
Fat P8
Rib
Fat Rump
IMF%
EMA

Comment:

Lot 50: Upnorth U230 is a horned bull that has a clean, dark red coat and displays spring of rib, early maturity and strength of spine.

Purchaser:

\$

YULGILBAR UNIFORM U142

Society ID: YUL23MU142

Born: 1/11/2023

22 Months | Male

WARENDA DENVER (P)
WARENDA LENNOX L32 (P)
WARENDA F13 (P)
SIRE: MURGONA NIGHTCAP (P)
DANGARFIELD STRONGHOLD
MURGONA FELICIA F55
MURGONA DELIGHT

WIGHTFIELDS ZINZAN G43 (P)
MOONGANA KARACHI 2724 (P)
MOONGANA B1449
DAM: YULGILBAR Q091 (P)
HARDIGREEN PARK NAUTILUS (P)
YULGILBAR K289 (P)
YULGILBAR G141

Weight
ADG
Scrotal
Fat P8
Rib
Fat Rump
IMF%
EMA

Comment:

Lot 51: Uniform U142 is a horned bull sired by Nightcap with a dark red, tropical skin type. This bull displays early maturity, strength of spine and has depth of flank.

Dam: Yulgilbar Q091 (P) has had 3 recorded calves, this includes a V heifer calf weaned earlier this year.

Purchaser:

\$

YULGILBAR URANUS U128

Society ID: YUL23MU128

Born: 26/8/2023

24 Months | Male

BULLAMAKINKA KONG K276
DUNLOP TAJ P484 (P)
MULTIPLE DAM
SIRE: DARR CREEK SERENGETI S100 (P)
CANOWINDRA NEBO N48
OAKDALE NATALIE 2032
OAKDALE IRMA 923
777 VEGAS 411 (P)
YULGILBAR NEVADA N40 (AI)(P)
YULGILBAR K145
DAM: YULGILBAR R171
MOONGANA KARACHI 2724 (P)
YULGILBAR P011
YULGILBAR K289 (P)

Weight
ADG
Scrotal
Fat P8
Rib
Fat Rump
IMF%
EMA

Comment:

Lot 52: Uranus U128 is a horned bull with a masculine head and hooded eye. He stands on good bone and is a deep sided, thick, easy doing bull.

Dam: Yulgilbar R171 has 2 recorded progeny and has preg tested back in calf.

Grand Dam: Yulgilbar P011 has 4 recorded progeny, including a V calf recently weaned. P011 has also preg tested back in calf.

Purchaser:

\$

YULGILBAR UKULELE U162 (P)

Society ID: YUL23MU162

Born: 10/12/2023

20 Months | Male

WIGHTFIELDS ZINZAN G43 (P)
MOONGANA KARACHI 2724 (P)
MOONGANA B1449
SIRE: YULGILBAR PATRIOT P034 (P)
HARDIGREEN PARK NAUTILUS (P)
YULGILBAR K109 (P)
YULGILBAR G069 (P)
WILGARON JESTER (AI)(P)
WARENDA SAHARA (P)
WARENDA K121 (P)
DAM: YULGILBAR H55 (P)
MULTIPLE DAM

Weight
ADG
Scrotal
Fat P8
Rib
Fat Rump
IMF%
EMA

Comment:

Lot 53: Ukulele U162 is a poll bull and another one of the youngest in the sale draft. A homebred Yulgilbar Patriot son who has a tropical outlook, smooth muscle pattern and a quiet temperament.

Dam: Yulgilbar H55 (P) has 7 recorded progeny, with U162 being her last.

Purchaser:

\$

YULGILBAR UPSET U272 (P)

Society ID: YUL23MU272

Born: 30/12/2023

20 Months | Male

WACO THE DON J1156 (P)
YARROWONGA IRONMAN P914 (PP)
MULTIPLE DAM
SIRE: WATASANTA STETSON 2796 (PS)
CANOWINDRA IN THE GROOVE (P)
WATASANTA 1525
KILLARNEY 52
WACO EINSTEIN K808 (P)
TOOKEY CREEK MALTA (P)
TOOKEY CREEK J59 (P)
DAM: YULGILBAR R169 (P)
GLENN OAKS JABBA J24 (P)
YULGILBAR N117 (P)
YULGILBAR G061 (P)

Weight
ADG
Scrotal
Fat P8
Rib
Fat Rump
IMF%
EMA

Comment:

Lot 54: Upset U272 is another younger bull in the sale draft who is structurally sound and will mature into a lovely bull.

Purchaser:

\$

YULGILBAR UTENSIL U258 (P)

Society ID: YUL23MU258

Born: 8/11/2023

21 Months | Male

BULLAMAKINKA KONG K276
DUNLOP TAJ P484 (P)
MULTIPLE DAM
SIRE: DARR CREEK SERENGETI S100 (P)
CANOWINDRA NEBO N48
OAKDALE NATALIE 2032
OAKDALE IRMA 923
CO/OP 3/9 (P)
YULGILBAR CO-OP J18 (AI)
YULGILBAR F159
DAM: YULGILBAR R007 (P)
HARDIGREEN PARK NAUTILUS (P)
YULGILBAR L169 (P)
YULGILBAR G053

Weight
ADG
Scrotal
Fat P8
Rib
Fat Rump
IMF%
EMA

Comment:

Lot 55: Utensil U258 is a poll bull that stands on strong bone with length of body, natural thickness and depth of flank.

Dam: Yulgilbar R007 (P) has 2 recorded progeny and has preg tested back in calf. U258 is her first born calf.

Purchaser:

\$

YULGILBAR UNFAIR U250 (P)

Society ID: YUL23MU250

Born: 21/12/2023

20 Months | Male

MULTIPLE SIRE
WACO ADDICTIVE F1090 (PS)
WACO D1003 (P)
SIRE: WACO QUEENSLANDER Q384 (PS)
MULTIPLE SIRE
YARRAWONGA H275 (P)
YARRAWONGA X687
TYNDALE EARTHQUAKE (P)
TALGAI HURRICANE H126 (P)
TALGAI EBONY
DAM: YULGILBAR Q219
MULTIPLE DAM

Weight
ADG
Scrotal
Fat P8
Rib
Fat Rump
IMF%
EMA

Comment:

Lot 56: Unfair U250 is a poll bull, sired by Waco Queenslander. He displays structural soundness, length of body and has a strong topline. U250 has a tidy sheath and he is one of the younger bulls in the sale draft.

Dam: Q219 has 3 recorded calves and is preg tested in calf.

Purchaser:

\$

YULGILBAR UNMISTAKABLE U278 (P)

Society ID: YUL23MU278

Born: 15/12/2023

20 Months | Male

YARRAWONGA ARCHER G280
GLENN OAKS JIBBA J28 (P)
WACO A493
SIRE: JAMAR STUNTMAN S16 (AI)(P)
PAMPOOLA 127T
PAMPOOLA 732A
PAMPOOLA 249F
CARDONA MAMBO M33 (P)
CARDONA PATTERSON P53 (P)
CARDONA FIREFLY M280 (PS)
DAM: YULGILBAR N143
WARENDA SAHARA (P)
YULGILBAR J99 (P)
YULGILBAR E031 (AI)

Weight
ADG
Scrotal
Fat P8
Rib
Fat Rump
IMF%
EMA

Comment:

Lot 57: Unmistakable U278 is a punchy poll bull that is thick and meaty. He has strength of spine, spring of rib and is structurally sound.

Dam: Yulgilbar N143 has 5 recorded calves and is preg tested back in calf.
Grand Dam: Yulgilbar J99 (P) has 6 recorded calves.

Purchaser:

\$



YULGILBAR UNBUTTON U260 (P)

Society ID: YUL23MU260

Born: 26/11/2023

21 Months | Male

BULLAMAKINKA KONG K276
DUNLOP TAJ P484 (P)
MULTIPLE DAM
SIRE: DARR CREEK SERENGETI S100 (P)
CANOWINDRA NEBO N48
OAKDALE NATALIE 2032
OAKDALE IRMA 923
CO/OP 3/9 (P)
YULGILBAR CO-OP J18 (AI)
YULGILBAR F159
DAM: YULGILBAR R261 (P)
YULGILBAR ZAMBIA
YULGILBAR E123 (P)
THE LAKES P206 (AI)(P)

Weight
ADG
Scrotal
Fat P8
Rib
Fat Rump
IMF%
EMA

Comment:

Lot 58: Unbutton U260 is a poll bull that has a strong topline and a quiet temperament. An all round neat and tidy bull.

Dam: Yulgilbar R261 (P) has 2 recorded progeny and is preg tested back in calf.

Grand Dam: Yulgilbar E123 (P) has 10 progeny recorded.

Purchaser:

\$

YULGILBAR UPWARD U234 (P)

Society ID: YUL23MU234

Born: 10/12/2023

20 Months | Male

CARDONA MAMBO M33 (P)
CARDONA PATTERSON P53 (P)
CARDONA FIREFLY M280 (PS)
SIRE: YULGILBAR QUIKSILVER Q144 (PP)
THE LAKES P1 (AI)
YULGILBAR J85 (P)
MULTIPLE DAM
WACO F268 (ET)
YARRAWONGA DROVER J586 (P)
WACO AUTUMN G1017 (ET)
DAM: YULGILBAR M149
WAVE HILL BONFIRE (P)
YULGILBAR H101 (P)
THE LAKES O219

Weight
ADG
Scrotal
Fat P8
Rib
Fat Rump
IMF%
EMA

Comment:

Lot 59: Upward U234 is another quiet, poll bull sired by homebred sire Yulgilbar Quiksilver. He displays great length and depth of body, has a dark, red coat and clean underline. Also one of the youngest in the sale draft.

Dam: Yulgilbar M149 has 6 recorded calves including a V calf recently weaned.

Purchaser:

\$

YULGILBAR U TOO U240 (P)

Society ID: YUL23MU240

Born: 19/10/2023

22 Months | Male

CARDONA MAMBO M33 (P)
CARDONA PATTERSON P53 (P)
CARDONA FIREFLY M280 (PS)
SIRE: YULGILBAR QUIKSILVER Q144 (PP)
THE LAKES P1 (AI)
YULGILBAR J85 (P)
MULTIPLE DAM
TOOKEY CREEK NAPOLEON (AI)
TOOKEY CREEK GERONIMO G38 (P)
G.B.L. A91 (P)
DAM: YULGILBAR L047
PAMPOOLA 915R
YULGILBAR B105
YULGILBAR V380

Weight
ADG
Scrotal
Fat P8
Rib
Fat Rump
IMF%
EMA

Comment:

Lot 60: U Too U240 is another polled, Quiksilver son who stands on good bone, has a sirey head and is dark red in colour. He has a quiet temperament, great depth of body and carries plenty of meat down the lower leg.

Dam: Yulgilbar L047 has 6 recorded calves and is preg tested back in calf.

Grand Dam: Yulgilbar B105 had 10 recorded calves.

Purchaser:

\$

YULGILBAR UNBELIEVABLE U280 (PS)

Society ID: U280
Born: 15/8/2023
24 Months | Male

SIRE: DULVERTON RICOCHET R083 CLUNIE RANGE HANK H358 DUNOON N668 DUNOON ELSA L806 ESSLEMONT LOTTO L3 DULVERTON DELL N069 DULVERTON DELL A049 DAM: YULGILBAR DAM	Weight
	ADG
	Scrotal
	Fat P8
	Rib
	Fat Rump
	IMF%
	EMA

Comment:
Lot 61: Unbelievable U280 is a powerful, poll scurred Sangus bull who is long, thick and has loads of punch. U280 has a clean coat type and is structurally sound.

Purchaser: _____

\$ _____

YULGILBAR UPPER HORTON U78 (PS)

Society ID: YUL23MU78
Born: 20/8/2023
24 Months | Male

SIRE: DULVERTON RICOCHET R083 CLUNIE RANGE HANK H358 DUNOON N668 DUNOON ELSA L806 ESSLEMONT LOTTO L3 DULVERTON DELL N069 DULVERTON DELL A049 DAM: YULGILBAR R071 CARDONA MAMBO M33 (P) CARDONA PATTERSON P53 (P) CARDONA FIREFLY M280 (PS) YARRAWONGA WALLABY (P) YULGILBAR J151 YULGILBAR Z249	Weight
	ADG
	Scrotal
	Fat P8
	Rib
	Fat Rump
	IMF%
	EMA

Comment:
Lot 62: Upper Horton U78 is a poll scour bull with a large frame. He displays volume, capacity and has a great length of body.

Purchaser: _____

\$ _____

YULGILBAR URCHIN U132 (PP)

Society ID: U132
Born: 8/8/2023
24 Months | Male

SIRE: GLENISA NICHOLLS N005 EXAR DENVER 2002B QUAKER HILL DEAD CENTER QUAKER HILL BLACKCAP 0A32 PEAKES ELSTON E4 GLENISA P.E. E4 PANDA K052 GLENISA MF093 PANDA G084 DAM: YULGILBAR DAM	Weight
	ADG
	Scrotal
	Fat P8
	Rib
	Fat Rump
	IMF%
	EMA

Comment:
Lot 63: Urchin U132 is a homozygous poll bull that is long and deep bodied, demonstrates volume, capacity and depth of body. Overall a very punchy bull.

Purchaser: _____

\$ _____

YULGILBAR UNBROKEN U306 (PP)

Society ID: YUL23MU306

Born: 25/8/2023

24 Months | Male

CLUNIE RANGE HANK H358	Weight	Comment: Lot 64: Unbroken U306 is another homozygous poll Sangus bull. A deep bodied, fleshy easy doing style of bull.
DUNOON N668		
DUNOON ELSA L806	ADG	
SIRE: DULVERTON RICOCHET R083		
ESSELMONT LOTTO L3	Scrotal	
DULVERTON DELL N069		Purchaser:
DULVERTON DELL A049	Fat P8	
	Rib	
WACO F268 (ET)	Fat Rump	
YARRAWONGA DROVER J586 (P)		
WACO AUTUMN G1017 (ET)	IMF%	\$
DAM: YULGILBAR P199 (P)		
DUNLOP FRAGGLE (P)	EMA	
YULGILBAR B141		
YULGILBAR X1667		

YULGILBAR UNTITLED U304 (P)

Society ID: YUL23MU304

Born: 20/8/2023

24 Months | Male

CLUNIE RANGE HANK H358	Weight	Comment: Lot 65: Untitled U304 is a structurally sound, poll bull that stands on good bone and has great length of body.
DUNOON N668		
DUNOON ELSA L806	ADG	
SIRE: DULVERTON RICOCHET R083		
ESSELMONT LOTTO L3	Scrotal	
DULVERTON DELL N069		Purchaser:
DULVERTON DELL A049	Fat P8	
	Rib	
WIGHTFIELDS ZINZAN G43 (P)	Fat Rump	
MOONGANA KARACHI 2724 (P)		
MOONGANA B1449	IMF%	\$
DAM: YULGILBAR P137 (P)		
TOOKEY CREEK GERONIMO G38 (P)	EMA	
YULGILBAR K137		
YULGILBAR Z121		

YULGILBAR UNDERLINE U80 (PP)

Society ID: U80

Born: 14/9/2023

23 Months | Male

CLUNIE RANGE HANK H358	Weight	Comment: Lot 66: Underline U80 is a long, clean coated, meaty homozygous polled Sangus bull. U80 is a very attractive bull with natural thickness and doing ability.
DUNOON N668		
DUNOON ELSA L806	ADG	
SIRE: DULVERTON RICOCHET R083		
ESSELMONT LOTTO L3	Scrotal	
DULVERTON DELL N069		Purchaser:
DULVERTON DELL A049	Fat P8	
	Rib	
	Fat Rump	
DAM: YULGILBAR DAM	IMF%	
	EMA	\$



YULGILBAR UPSTAGE U312 (P)

Society ID: U312

Born: 19/9/2023

23 Months | Male

CLUNIE RANGE HANK H358
DUNOON N668

DUNOON ELSA L806

SIRE: DULVERTON RICOCHET R083

ESSLEMONT LOTTO L3

DULVERTON DELL N069

DULVERTON DELL A049

Weight

ADG

Scrotal

Fat P8

Rib

Fat Rump

IMF%

EMA

Comment:

Lot 67: Upstage U312 is a poll bull with a large frame, volume and length of body. He stands on good bone and is structurally sound.

Purchaser:

\$

DAM: YULGILBAR DAM

YULGILBAR ULYSSES U336 (PP)

Society ID: U336

Born: 15/9/2023

23 Months | Male

TUWHARETOA REGENT D145
BOOROOMOOKA KINGY K9

BOOROOMOOKA TRACEY A281

SIRE: BOOROOMOOKA KINGY N81

TE MANIA AFRICA A217

BOOROOMOOKA WHITENESS H627

BOOROOMOOKA WHITENESS D230

Weight

ADG

Scrotal

Fat P8

Rib

Fat Rump

IMF%

EMA

Comment:

Lot 68: Ulysses U336 is a homozygous poll bull with an early maturity pattern, length of body and plenty of carcass.

Purchaser:

\$

DAM: YULGILBAR DAM

YULGILBAR UNLIKELY U346 (PP)

Society ID: U346

Born: 25/9/2023

23 Months | Male

CLUNIE RANGE HANK H358
DUNOON N668

DUNOON ELSA L806

SIRE: DULVERTON RICOCHET R083

ESSLEMONT LOTTO L3

DULVERTON DELL N069

DULVERTON DELL A049

Weight

ADG

Scrotal

Fat P8

Rib

Fat Rump

IMF%

EMA

Comment:

Lot 69: Unlikely U346 is a homozygous poll bull that is slick coated and early maturing. He is a thick, meaty style of bull with loads of softness.

Purchaser:

\$

DAM: YULGILBAR DAM

YULGILBAR URUNGA U334 (P)

Society ID: YUL23MU334

Born: 17/9/2023

23 Months | Male

COLEMAN CHARLO 0256
S A V RAINDANCE 6848
S A V BLACKCAP MAY 4136

SIRE: FRANKLIN RAINDANCE R17

JINDRA DOUBLE VISION
EAGLEHAWK MOONGARRA L172
EAGLEHAWK MOONGARRA G71

CO/OP 3/9 (P)
YULGILBAR CO-OP J18 (AI)
YULGILBAR F159

DAM: YULGILBAR R35

MULTIPLE SIRE
YULGILBAR E273
MULTIPLE DAM

Weight

ADG

Scrotal

Fat P8

Rib

Fat Rump

IMF%

EMA

Comment:

Lot 70: Urunga U334 is a poll bull with a clean coat type, is early maturing and is a deep thick and meaty type of bull.

Purchaser:

\$

SANTA POWER

2022 RNA Paddock to Palate Competition



**Class 37A. Rabobank Best Weight Gain.
Pen of Six Grain Fed Steers (100 Day)**

1st Yulgilbar Pastoral Company Baryulgil NSW
Hereford/Santa ADG 3.262kg

Class 37A. Rabobank Highest Individual Weight Gain.

1st Yulgilbar Pastoral Company, Baryulgil, NSW
Hereford/Santa ADG 3.59kg

**Class 38A. Elanco Animal Health Best Weight Gain.
Pen of Six Grain Fed Steers (70 day)**

1st Yulgilbar Pastoral Company, Baryulgil, NSW
Santa Gertrudis ADG 3.186kg



Santa Gertrudis

1300 305 708
www.santagertrudis.com.au

Kris Elliott, Yulgilbar Pastoral Company and Brett Ellem, General Manager, Yulgilbar Pastoral Company.



Yulgilbar Bulls are Immune ready.



All Bulls have been prepared under the immune ready guidelines.

7in1

Pestiguard

Vibrio

3 day sickness

Bovisheild

Rhino Guard

Botulism

PRESCRIBED CONDITIONS OF SALE BY AUCTION



Property, Stock & Business Agents Act (NSW) 2002,
Part 6, s.77 and Regulations 2003.

Clause 18 (1) – The following conditions are applicable to and in respect of the sale by auction of land or livestock:

- (a) The principal's reserve price must be given in writing to the auctioneer before the auction commences.
- (b) A bid for the seller cannot be made unless the auctioneer has, before the commencement of the auction, announced clearly and precisely the number of bids that may be made by us on behalf of the seller.
- (c) The highest bidder is the purchaser, subject to any reserve price.
- (d) In the event of a disputed bid, the auctioneer is the sole arbitrator and the auctioneer's decision is final.
- (e) The auctioneer may refuse to accept any bid that, in the auctioneer's opinion, is not in the best interests of the seller.
- (f) A bidder is taken to be a principal unless, before bidding, the bidder has given to the auctioneer a copy of a written authority to bid for on behalf of another person.
- (g) A bid cannot be made or accepted after the fall of the hammer.
- (h) As soon as practicable after the fall of the hammer the purchaser is to sign the agreement (if any) for sale.

Clause 18 (2) – The following conditions, in addition to the above, are applicable to and in respect of the sale by auction of residential property or rural land:

- (a) All bidders must be registered in the Bidders' Record and display an identifying number when making a bid.
- (b) Subject to subclause (2A), the auctioneer may make only one vendor bid at an auction for the sale of residential property or rural land and no other vendor bid may be made by the auctioneer or any other person.
- (c) Immediately before making a vendor bid the auctioneer must announce that the bid is made on behalf of the seller or announced "vendor bid".

Clause 18 (2A) – the following conditions, in addition to the above, are applicable to and in respect of the sale by auction of co-owned residential property or rural land or the sale of such land by a seller as executor or administrator:

- (a) More than one vendor bid may be made to purchase the interest of a co-owner
- (b) A bid by or on behalf of an executor or administrator may be made to purchaser in that capacity.
- (c) Before the commencement of the auction, the auctioneer must announce that bids to purchase the interest of another co-owner or to purchase as executor or administrator may be made by or on behalf of the seller.
- (d) Before the commencement of the auction, the auctioneer must announce the bidder registration number of any co-owner, executor or administrator or any person registered to bid on behalf of any co-owner, executor or administrator.

Clause 18 (3) – The following condition, in addition to subclause (1), is applicable to and in respect of the sale by auction of livestock:

The purchaser of livestock must pay the stock and station agent who conducted the auction (or under whom immediate and direct supervision this auction was conducted) or the vendor the full amount of the purchase price:

- (a) if that amount can reasonably be determined immediately after the fall of the hammer – before the close of the next business day following the auction, or
- (b) if that amount cannot reasonably be determined immediately after the fall of the hammer – before the close of the next business day following determination of that amount, unless some other time for payment is specified in a written agreement between the purchaser and the agent or the purchaser and the vendor made before the fall of the hammer.



Property, Stock and Business Agents Act (NSW) 2002,
section 78 (3) and Regulations 2003, clause 20 (1)

WARNINGS

PENALTY FOR COLLUSIVE PRACTICES

It is an offence against the Property, Stock & Business Agents Act 2002 for a person to do any of the following as a result of a collusive practice, or to induce or attempt to induce another person by a collusive practice to do any of the following:

- (a) to abstain from bidding, or
- (b) to bid to a limited extent only, or
- (c) to do any other act or thing that might prevent free and open competition.

Severe penalties may be imposed on persons convicted of collusive practices.

Property, Stock & Business Agents Act (NSW) 2002,
section 83 (2) and Regulations 2003, clause 20 (2):

SUCCESSFUL BIDDERS

The actual successful bidder at an auction sale must give to the auctioneer or an employee of the auctioneer:

- (a) the bidder's name, or
- (b) the name of the person on whose behalf the successful bid was made.

PENALTY FOR DUMMY BIDDING

It is an offence against the Property, Stock & Business Agents Act 2002 for a person to do any of the following:

- (a) make a bid as the seller,
- (b) make a bid of behalf of the seller (unless the person is the auctioneer),
- (c) procure another person to make a bid on behalf of the seller.

Any bid made with the dominant purpose of benefitting the seller constitutes a bid made of behalf of the seller.

A bid may be found to be a bid made on behalf of the seller even though the seller did not:

- (a) request the bid, or
- (b) have any knowledge of the bid.

Severe penalties may be imposed on persons convicted of dummy bidding.

OCCUPATIONAL HEALTH AND SAFETY

All persons attending the sale are advised by the seller that the sale may involve a risk of physical harm and/or loss. Livestock, machinery, plant and equipment may be offered for sale and each such item has its own inherent risks that persons attending the sale need to appraise themselves of. All persons attending the sale do so at their own risk. All purchasers of items sold are advised that they must ensure, before each such item is removed from the sale, that it is safe and without risks to health when properly used. The seller does not accept any responsibility for any harm, loss or damage whatsoever and that you enter or attend the sale at your own risk. The seller's agent is instructed by the seller to conduct the sale in the manner directed by the seller with items placed out and submitted for sale as directed by the seller. The seller's agent has no control over any items offered for sale and accepts no responsibility for any harm, loss or damage whatsoever and that you enter or attend the sale at our own risk.

Buyer's Instruction Sheet

YULGILBAR PRODUCTION SALE - FRIDAY 5TH SEPTEMBER 2025

No verbal instructions can be accepted



Name

Address

State Postcode

Phone Fax Email

Stud Name

Stud Number

PIC (property identification code) number

Buyer's Bid Card No.

UHF Channel

Account to be settled by

Agent Phone Number

Lots purchased

Transfer required

Trucking requirements.....

Insure for state period

Any further instructions

.....

.....

.....

.....

.....

.....

.....

.....

.....

.....

Buyer's signature

2025 Yulgilbar Santa Gertrudis Sale Summary

NO.	DESCRIPTION	TOTAL	AVERAGE	TOP PRICE
	Classified Bulls			
	Herd Bulls			
	Classified Females			
	Gross			



Yulgilbar Genetics
Commercial Female Sale
February 2026

Notes





**Yulgilbar a stud with
history breeding cattle
for the future 1954 – 2025**